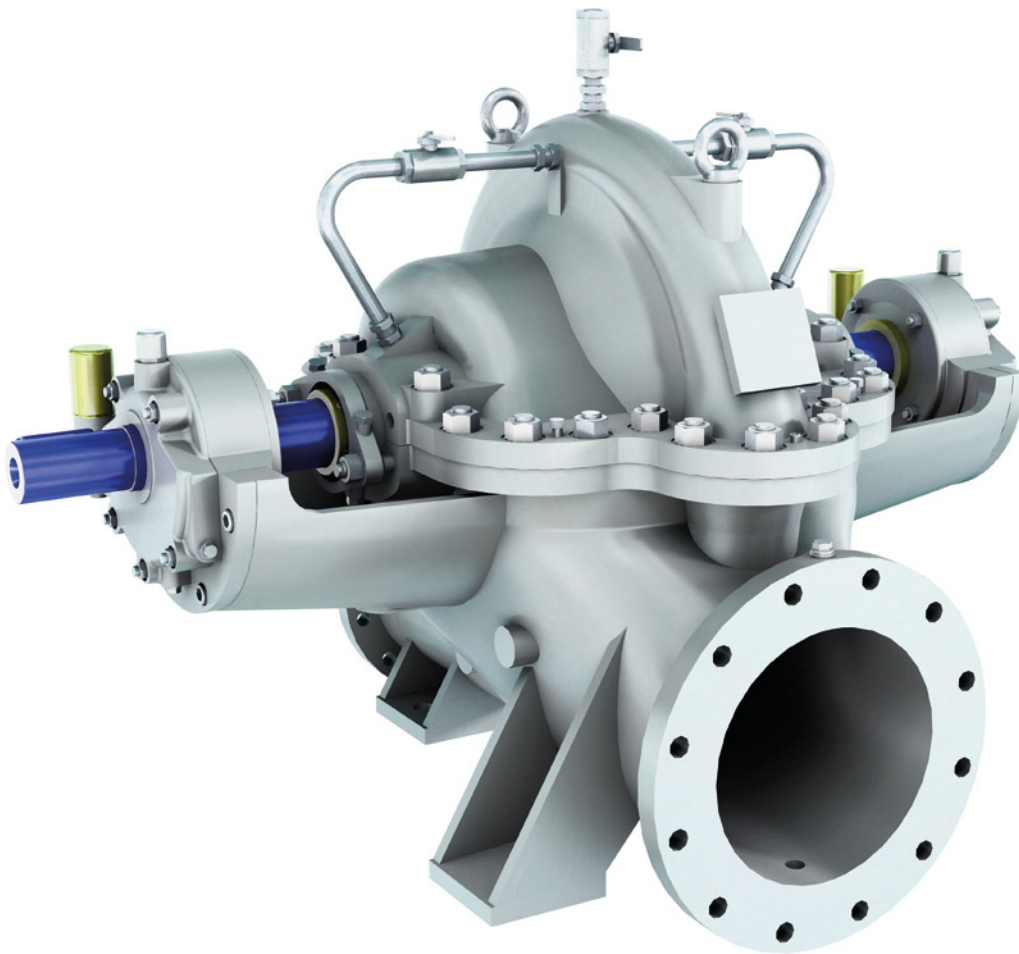


SULZER

Sulzer Pumps

SZM and SZMV Between Bearings Double Suction Centrifugal Pumps



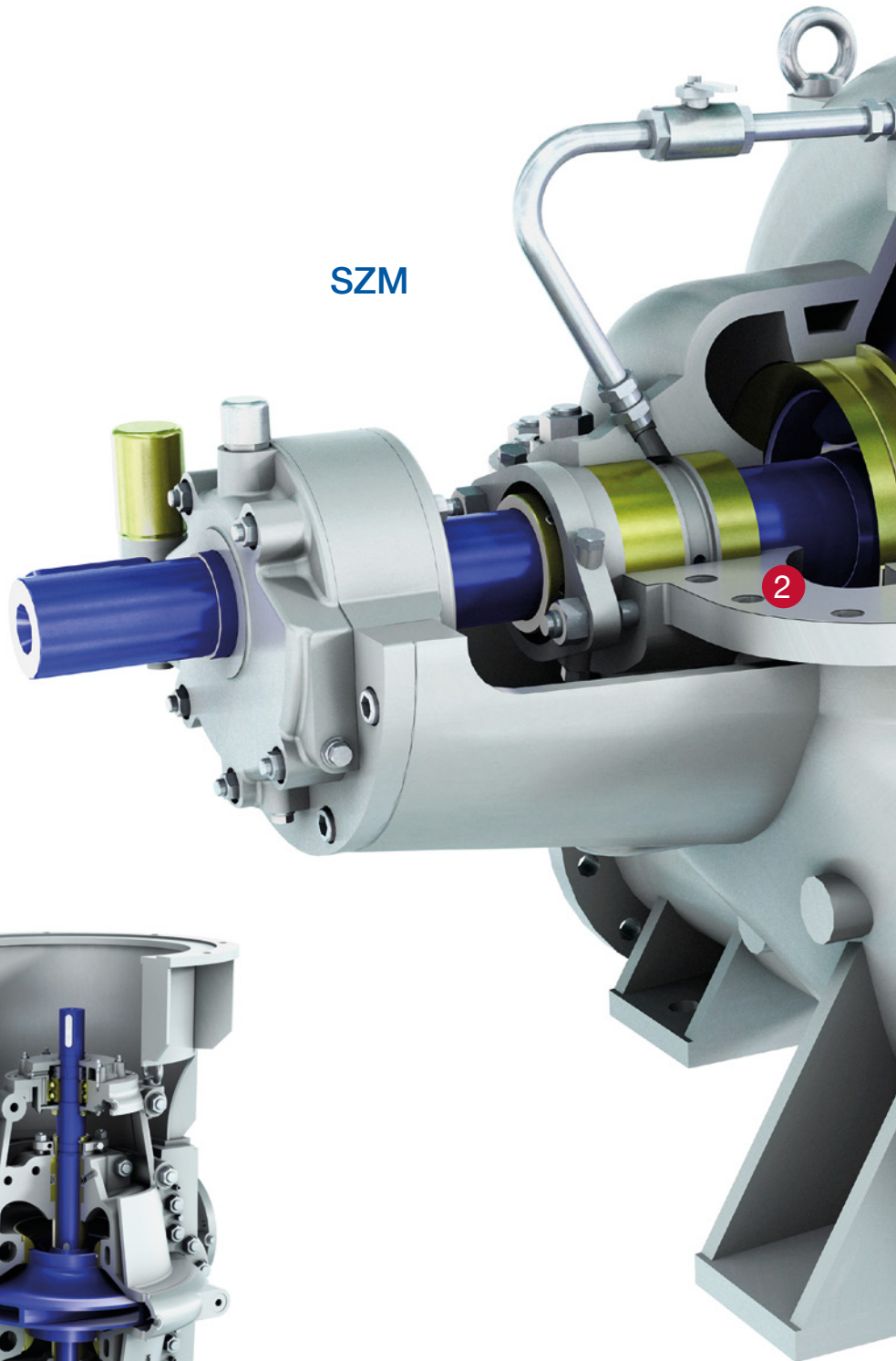
The Heart of Your Process

Main Applications

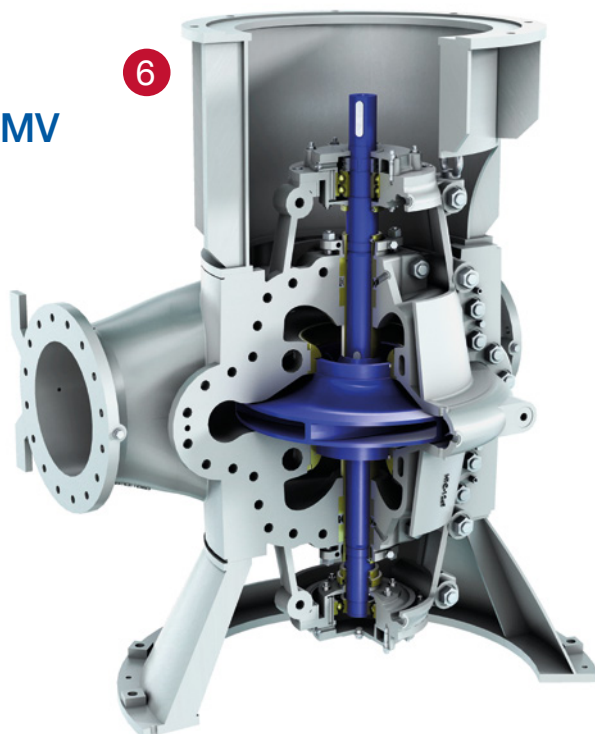
SZM and SZMV pump series provide good reliability during continuous operation and handle clean or slightly polluted fluids in water, wastewater and other industrial applications such as:

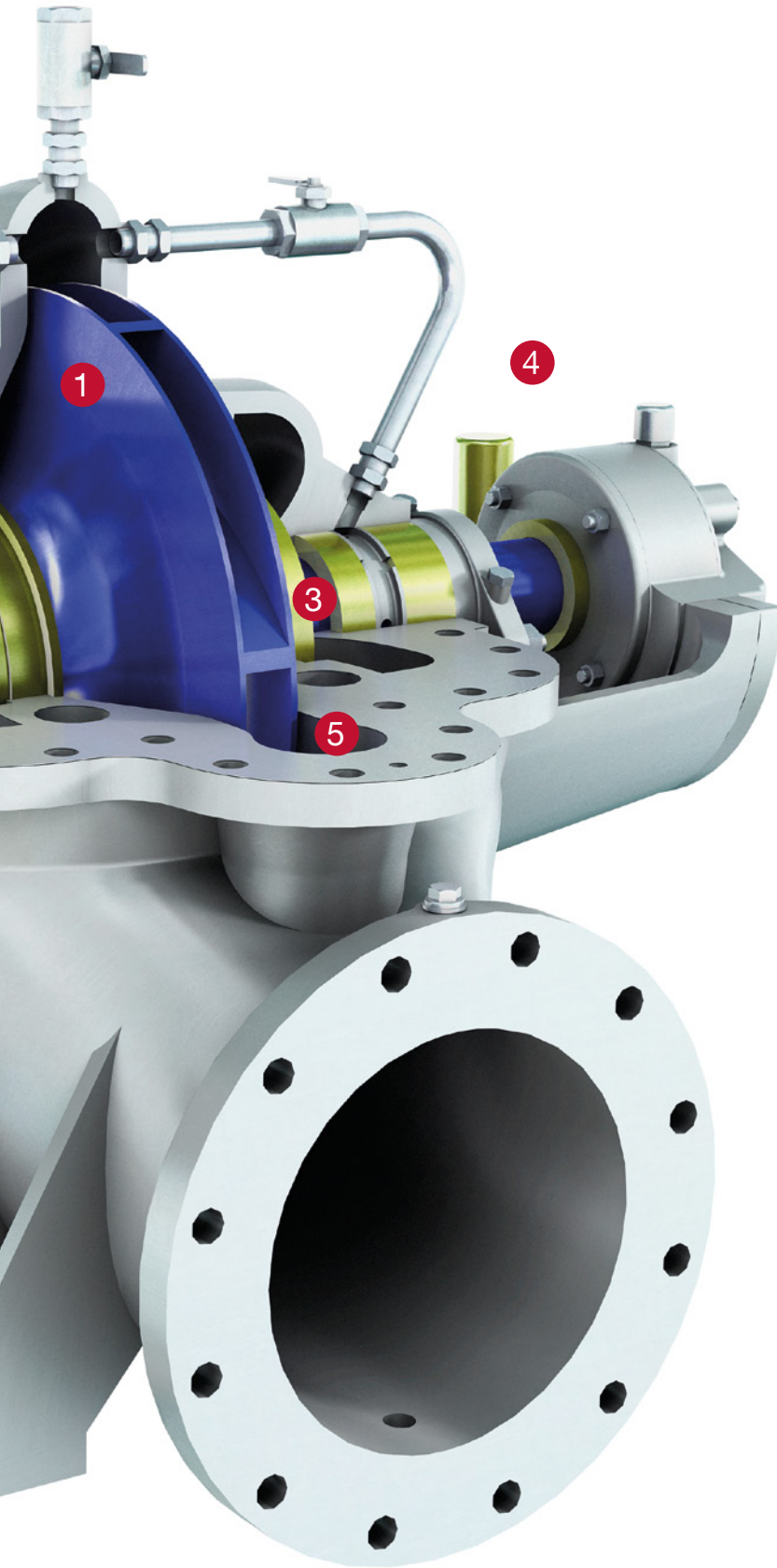
- Water Treatment
- Desalination
- Water Transport & Supply
- Irrigation
- Power Plants (cooling water auxiliary services)
- HPI (general water cooling services)
- General Industry

SZM



SZMV





Features and Benefits

- 1 Double suction impeller**
 - Balance the axial thrust
 - Improves the suction capability
- 2 Axial split casing design with inline suction and discharge nozzles in the bottom casing**
 - Allows easy maintenance by removing the upper casing without disassembling suction and discharge nozzle
- 3 Casing wear rings with optional impeller wear rings**
 - Ensure a proper maintenance and longer pump lifecycle
- 4 Heavy duty, grease or oil lubricated bearings**
 - Ball bearings at both Drive End (DE) and Non-Drive End (NDE) for smaller sizes
 - Roller bearing at DE and double angular contact bearing at DE for the larger sizes
 - Combines modularity with heavy duty design to ensure a reliable operation
- 5 Double volute available for the larger sizes**
 - Reduces the radial thrust
- 6 Vertical arrangement available (SZMV)**
 - Enables adaptability to customer layout requirements

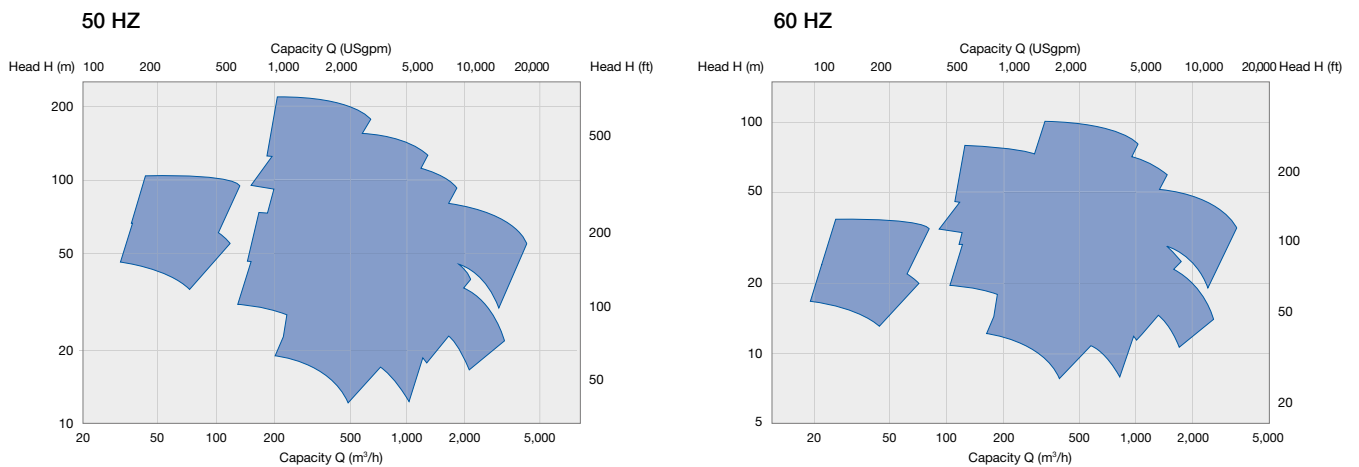
SZM and SZMV Between Bearings Double Suction Centrifugal Pumps



Operating Data

| 50 Hz | | 60 Hz |
|-------------------------------|--------------|--------------------|
| up to 500 mm | Pump sizes | up to 20 inches |
| up to 3,500 m ³ /h | Capacities | up to 15,000 USgpm |
| up to 200 m | Heads | up to 330 feet |
| up to 25 bar | Pressures | up to 362 psi |
| up to 150 °C | Temperatures | up to 302 °F |

Performance Ranges



Materials

| Pump part | Material |
|-----------|---|
| Casing | Cast Iron, Carbon Steel, Duplex, Superduplex |
| Impeller | Cast Iron, Bronze, Carbon Steel, Stainless Steel, Duplex, Superduplex |
| Shaft | Carbon Steel, Stainless Steel, Duplex, Superduplex |

We Do What We Say

Customer Partnership

- We are **reliable partners**.
- We provide a **high level of service**.
- We **make our customers more competitive**.



Committed People

- We drive **accountability**.
- We are **open and transparent**.
- We are **team players**.



Operational Excellence

- We **focus on results**.
- We take **initiative** and work within **established processes**.
- We **act safely**.



A Global Specialist at Your Doorstep

Sulzer Pumps is recognized for excellent product quality, performance reliability and technical innovation. A truly global company, we are close to customers with:

- a network of 22 manufacturing facilities
- more than 60 service centers
- worldwide sales office presence





www.sulzer.com

E10131 en 10.2013 (1,000), Copyright © Sulzer Pumps

This brochure is a general presentation. It does not provide any warranty or guarantee of any kind. Please, contact us for a description of the warranties and guarantees offered with our products. Directions for use and safety will be given separately. All information herein is subject to change without notice.