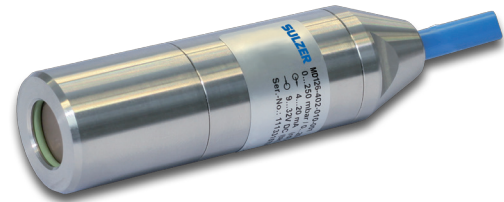


Submersible Pressure Sensor Type ABS MD 126

SULZER

Features

- Dry ceramic sensor
- Accuracy $\leq 0.3\%$
- Cable according Bg V V-1.12.96 specifications



Technical specifications

Description	
Material:	
Cable	PE, shielded
Housing	Stainless steel 1.4404
Sensor	Ceramic Al_2O_3 , gold coated
Output signal	4...20 mA, 2-wire, fixed to the sensors measuring range
Accuracy	$\leq \pm 0.3\%$ FS @ 25 °C
Max overload	8 bar
Response time	200 ms
Supply voltage	9...30 V DC
Ambient temperature	-25...80 °C
Temperature coeff.	$\leq \pm 0.015\%$ FS/K (Zero)
Long term stability	$\leq \pm 0.3\%$ FS p.a.
Protection	IP 68
Weight of sensor	approx. 0.3 kg
Weight of cable	0.4 kg / 10 m
Electrical connection	PE cable with pressure compensation capillary and filter

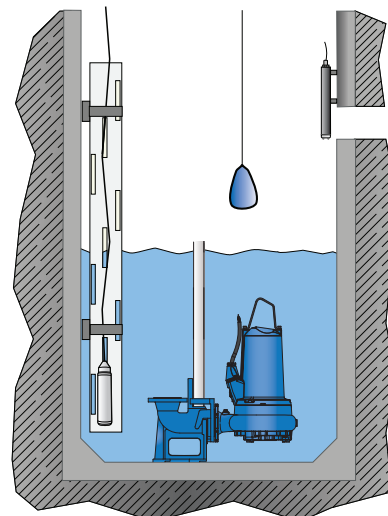
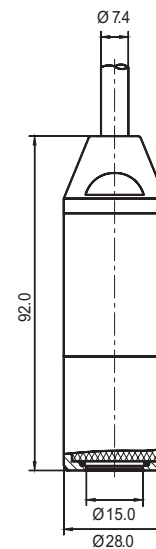
Measuring Range	Max. Overpressure	Cable Length
0 - 2.5 mH ₂ O	4 bar	10 m
0 - 2.5 mH ₂ O	4 bar	30 m
0 - 5 mH ₂ O	8 bar	10 m
0 - 10 mH ₂ O	8 bar	15 m

Mounting pressure sensor MD 126

In pits or tanks without turbulence the sensor can be mounted hanging freely in its cable.

If there is a strong turbulence we recommend that the sensor is protected inside a pipe, with a diameter of at least 50 mm, which is mounted vertical alongside the tank or pit wall.

Dimensions (mm):



CE

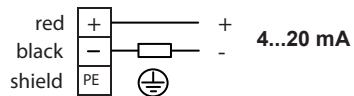
MD 126 conform with the following Council Directives and Generic standards:

Safety: EN 61010-1:2010

EMC: EN 61326-1:2006

Electrical connections

4...20 mA, 2-wire



U = 9...30V DC

Load diagram

Supply-voltage VDC

