



- Reduced emissions
- Improved operation
- Increased efficiency

Innovative Solutions for the Landfill and Wastewater Industries

Engines driven by gases from the landfill and wastewater industries must operate under harsh conditions. Strict emissions regulations mandated by authorities and environmental agencies also present a challenge for operators of such systems. Sulzer offers solutions for both challenges using engine controls and catalysts from Altronic and EmeraChem. We evaluate your system and develop a solution to meet and exceed your operational requirements. Reduction of emissions and improved operation are only two of the benefits we offer to our customers.

We have spent many hours with our customers to develop the optimal solution and have gained much experience in this field. Sulzer not only offers installation and maintenance but also a full range of services. Our solutions help you to reduce emissions, not only to comply with legal regulations but to exceed them. Our experts work with you to develop the best possible solution.

Benefit from:

- Reduced emissions
- Increased efficiency
- Reduced fuel consumption
- Reduction in engine downtime
- Improved operation
- Sulzer's experience and expertise
- Cutting-edge solutions tailored to your needs



Engine Performance Enhancements

Altronic EPC 100E

Air/Fuel Ratio Control for Stoichiometric and Lean-Burn Carbureted Engines. The EPC control systems utilize microprocessor technology, thus allowing for the execution of sophisticated control strategies, and a high-level of application-specific customization. This advanced control and setup functionality is coupled with a complete line of precision, industry-proven fuel control valves. Taken together, these capabilities collectively assure the user of long-term air/fuel ratio stability and reduced engine exhaust emissions.

Altronic EPC 250

The Altronic Controls EPC-250 Engine Performance Controller is designed to provide continually optimized control of air/fuel ratio and ignition timing on spark ignited engines and reduced engine exhaust emissions. Due to harsh exhaust contaminates an Oxygen Sensor in the exhaust stream is not practical. Therefore, we utilize the EPC-250 Series to meter the fuel input on engines running on landfill gas. This allows for predictive Air/Fuel Ratio Control using inputs such as load, fuel gas BTU, fuel gas O₂, air manifold pressure and any additional inputs to map fuel requirements to the engine. With the predictive curves we can control the emissions on this harsh environment without relying on an O₂ sensor in the exhaust system.

EmeraChem ADCAT™ Oxidation Catalyst

Oxidation catalysts destroy carbon monoxide (CO) and volatile organic compounds from lean-burn reciprocating engines. EmeraChem's family of oxidation catalysts use only platinum precious metal for high performance, long life, poison resistance, and their ability to be chemically regenerated time after time.

About Sulzer

Sulzer provides cutting-edge services and solutions for rotating equipment dedicated to improving customers' processes and business performance. When pumps, turbines, compressors, generators, and motors are essential to operations, customers need a service partner they can trust. With our technically advanced and innovative solutions, we give our customers the assurance they need to focus on their operations. Customized solutions help to reduce maintenance time and cost. Our partners' business demands are ever increasing and changing but they can rely on our experts to provide the optimal solution to improve operational efficiency and reliability. We provide high-quality services at competitive prices and delivery times.



Sulzer Turbo Services New Orleans Inc.

Belle Chasse, LA: Phone +1 (504) 392-1800

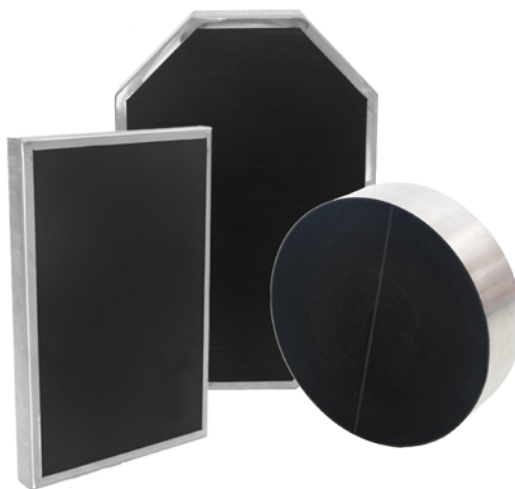
Kalkaska, MI: Phone +1 (231) 258-2500

New Iberia, LA: Phone +1 (337) 369-6882

sulzertsneworleans@sulzer.com



© Altronic



© EmeraChem