

SULZER**SPARE PARTS LIST/ERSATZTEILLISTE/LISTE DE PIÈCES DE RECHANGE**

RW 280 S25/4D 50Hz Std. & EX
RW 280 S28/4 60Hz Std. & FM
RW 200 S18/4W 60Hz Std. & FM

Valid from Serial Number: 100 -

(New design lifting bracket, see kit 62665268)

Page : _____

Issue of : 20/10/11

Supersedes Issue : _____

Issue No. : 01,02,03

Drawing ref. Nr. : ANS12075-02

Pos. No.	Part No.	Kit	Qty	Description	Benennung	Designation	Dimensions /Din	Comments	Price
1	31005034		1	Motorhousing	Motorgehäuse	Carcasse moteur			
2	11120468	AB	1	O-ring	O-ring	Joint torique	47x3 DIN3770	Viton	
3	43025540		1	Cable	Kabel	Cable	7x1.5 Tecwater	10m (W)	
3	43025541		1	Cable	Kabel	Cable	7x1.5 Tecwater	20m (W)	
3	43025542		1	Cable	Kabel	Cable	7x1.5 Tecwater	30m (W)	
3	43025535		1	Cable	Kabel	Cable	7x1.5 Tecwater	10m (D)	
3	43025536		1	Cable	Kabel	Cable	7x1.5 Tecwater	20m (D)	
3	43025537		1	Cable	Kabel	Cable	7x1.5 Tecwater	30m (D)	
3	43025204			Cable	Kabel	Cable	14/7 SOW-A	10m (W)	
3	43025218			Cable	Kabel	Cable	14/7 SOW-A	20m (W)	
3	43025219			Cable	Kabel	Cable	14/7 SOW-A	30m (W)	
3	43025203			Cable	Kabel	Cable	14/7 SOW-A	10m (D)	
3	43025212			Cable	Kabel	Cable	14/7 SOW-A	20m (D)	
3	43025220			Cable	Kabel	Cable	14/7 SOW-A	30m (D)	
4	31320140		1	Cable cap	Kabeleinführung	Entree de cable	GG25 (Ø20)	Cable 4x1.5+3x0.5,14/7	
5	42015009		2	Washer	Scheibe	Rondelle	Ø34x18x1.5	Cable 4x1.5+3x0.5 Cable 7x1.5 Tecwater	
5	42015005		2	Washer	Scheibe	Rondelle	34x19.5x1.5	Cable SOW-A 14/7	
6	11210238		4 (2)	Cylinder screw	Zyl.Blechschaube	Vis à tête plate	M8x30 DIN912	1.4401 (2) Easyfit	
8	31425029	C	1	Bracket	Haltewinkel	Butée		Rear	
9	31425030	C	1	Bracket	Haltewinkel	Butée		Front	
8	44425050		4	Bracket-right	Haltewinkel	Butée		Use 31425029, 31425030,	
9	44425051		4	Bracket-left	Haltewinkel	Butée		& 11210244, 11400055 (x2)	
10	11210243	C	2	Cylinder screw	Zylinderschraube	Vis à tête cylindrique	M8x25 DIN912	1.4401	
11	11400084	C	2	Hexagonal nut	Sechskantmutter	Ecrou hexagonal	M8 DIN985	1.4401	
**	11210106	C	3	Cylinder screw	Zylinderschraube	Vis à tête cylindrique	M8x20 DIN912	1.4401	
**	11400084	C	3	Hexagonal nut	Sechskantmutter	Ecrou hexagonal	M8 DIN985	1.4401	
**	11210244	C	2	Cylinder screw	Zylinderschraube	Vis à tête cylindrique	M10x25 DIN912	1.4401	
**	11400055	C	2	Hexagonal nut	Sechskantmutter	Ecrou hexagonal	M10 DIN985	1.4401	
12	42340346	C	1	Coupling	'Kupplung	'Accouplement			
13	43075028	A	1	Cable seal	Kabeldichtung	Joint de kabel	Ø34x14.8x29.5H	Cable 7x1.5 Tecwater	
13	43075034	B	1	Cable seal	Kabeldichtung	Joint de kabel	Ø34x14.8x29.5H (viton)	Cable 7x1.5 Tecwater	
13	43075048	A	1	Cable seal	Kabeldichtung	Joint de kabel	Ø34x16x29.5H	Cable 4x1.5+3x0.5	
13	43075057	B	1	Cable seal	Kabeldichtung	Joint de kabel	Ø34x16x29.5H (viton)	Cable 4x1.5+3x0.5	
13	43075029	A	1	Cable seal	Kabeldichtung	Joint de kabel	Ø34x18x29.5H	Cable SOW-A 14/7	
13	43075035	B	1	Cable seal	Kabeldichtung	Joint de kabel	Ø34x18x29.5H (viton)	Cable SOW-A 14/7	
14	44510118		1	Lifting device	Hebevorrichtung	Mecanisme de levage			
15	12180044		4	Butt connection	St. verbinder	Connecteur	Ø1.0-2.5mm		
16	11060006		1	Support washer	Tragscheibe	Rondelle	Ø25x35x2 DIN988		
17	11120817	A	1	O-ring	O-ring	Joint torique	Ø160x3 DIN3771		
17	11120870	B	1	O-ring	O-ring	Joint torique	Ø160x3 DIN3771	Viton	
18	11020006		1	Ball bearing	Kugellager	Roulement à billes	5205 B. DIN628		

SPARE PARTS LIST/ERSATZTEILLISTE/LISTE DE PIÈCES DE RECHANGE

RW 280 S25/4D 50Hz Std. & EX
RW 280 S28/4 60Hz Std. & FM
RW 200 S18/4W 60Hz Std. & FM

Valid from Serial Number: 100 -

(New design lifting bracket, see kit 62665268)

Page : _____

Issue of : 20/10/11

Supersedes Issue : _____

Issue No. : 01,02,03

Drawing ref. Nr. : ANS12075-02

Pos. No.	Part No.	Kit	Qty	Description	Benennung	Designation	Dimensions /Din	Comments	Price
19	11080010	AB	1	Circlip	Sicherungsring	Circlips	Ø52x2 DIN472		
20	11110001		1	Mechanical seal	Gleitringdichtung	Garniture mecanique	Ø20mm		
20	11110149		1	Mechanical seal	Gleitringdichtung	Garniture mecanique	Ø20mm (Viton)	Viton	
21	11470072		1	Washer	Scheibe	Rondelle	Ø8.4 DIN9021	1.4301	
22	11200230		1	Hexagonal screw	Sechskantschraube	Vis hexagonal	M8x16 DIN933		
23	14990008		1	Shackle	Schäkel	Manille	DIN82101		
24	11010017		1	Ball bearing	Kugellager	Roulement à billes	6204 ZR.C3 DIN625		
25	65005499		1	Stator	Wicklung	Stator	230/400/3/50,	S25/4	
25	65005500		1	Stator	Wicklung	Stator	400/3/50	S25/4	
25	65005501		1	Stator	Wicklung	Stator	500/3/50	S25/4	
25	65005562		1	Stator	Wicklung	Stator	115/1/60	S18/4	
25	65005563		1	Stator	Wicklung	Stator	208/1/60	S18/4	
25	65005564		1	Stator	Wicklung	Stator	230/1/60	S18/4	
25	65005502		1	Stator	Wicklung	Stator	208/3/60	S28/4	
25	65005525		1	Stator	Wicklung	Stator	230/3/60	S28/4	
25	65005505		1	Stator	Wicklung	Stator	380/3/60	S28/4	
25	65005500		1	Stator	Wicklung	Stator	460/3/60	S28/4	
25	65005501		1	Stator	Wicklung	Stator	575/3/60	S28/4	
28	65015084		1	Rotor shaft	Rotor mit Welle	Rotor avec arbre	1.4201	S18/4,S25/4,S28/4	
28	65015085		1	Rotor shaft	Rotor mit Welle	Rotor avec arbre	1.4401	S18/4,S25/4,S28/4	
29	11130003	AB	1	Seal ring	Dichtung	Rondelle joint	Ø6x10 DIN7603		
30	11210253		1	Cylinder screw	Zylinderschraube	Vis à tête cylindrique	M6x10 DIN912		
31	11490020	AB	1	Seal washer	Verschlußscheibe	Rondelle joint	DIN470		
32	11070007	AB	1	Circlip	Sicherungsring	Circlip	Ø25x1.2 DIN471		
34	11210239		3	Cylinder screw	Zylinderschraube	Vis à tête cylindrique	M10x35 DIN912		
35	31155024		1	Bearing lid	Lager deckel	Couvercle palier	GG25	Std./ DI-probe Ex Euro	
35	31155026		1	Bearing lid	Lager deckel	Couvercle palier	GG25	FM DI-probe	
35	31155036		1	Bearing lid	Lager deckel	Couvercle palier	GG25	Std.Euro DI-probe Std.US DI-probe	
36	11090009	AB	1	Lip seal	Wellendichtung	Joint à levres	Ø20x52x10 DIN3760		
37	11030046		0.56	Oil	Öl	Huile			
38	31045021		1	Oil chamber	Ölkammer	Boîte a huile			
39	15070082	AB	1	Clamping Strap	Klemmbügel	Etrier serrage	7mm		
40	15070083	AB	1	Clamping segment	Klemme	Bague serrage			
41	43075070	A	1	Seal ring	Dichtung	Rondelle joint			
41	43075071	B	1	Seal ring	Dichtung	Rondelle joint		Viton	
42	11070005	AB	1	Circlip	Sicherungsring	Circlip	Ø20x1.2 DIN471	1.4122	
43	11630131		1	Impeller key	Paßfeder	Clavette	6x6x16		
44	35075190		1	Propeller	Propeller blatt	Hélice	Ø200	RW 2022	
44	35075191		1	Propeller	Propeller blatt	Hélice	Ø280	RW 2822	
44	35075215		1	Propeller	Propeller blatt	Hélice	Ø250	RW 2821	
45	11650001	AB	1	Locking Washer	Klemmscheibe	Rondelle-frein	M8 PVC/NITR		
46	11260100		1	Lens Head Screw	Flachkopfschraube	Vis à tête plate	M8x10 DIN85		

SULZER

SPARE PARTS LIST/ERSATZTEILLISTE/LISTE DE PIÈCES DE RECHANGE

RW 280 S25/4D 50Hz Std. & EX
RW 280 S28/4 60Hz Std. & FM
RW 200 S18/4W 60Hz Std. & FM

Valid from Serial Number: 100 -

(New design lifting bracket, see kit 62665268)

Page : 20/10/11

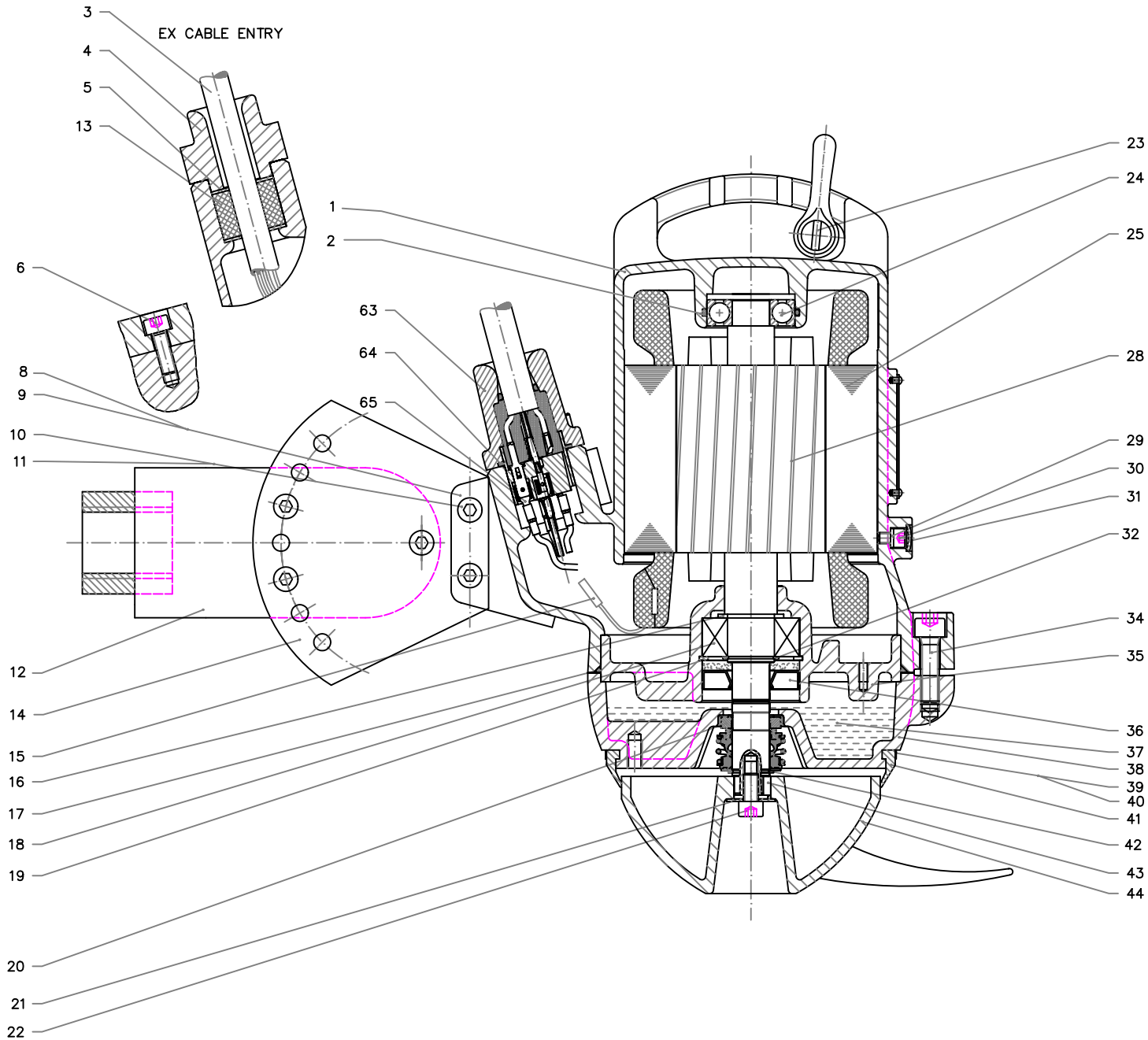
Issue of : 20/10/11

Supersedes Issue :

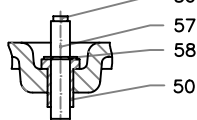
Issue No. : 01,02,03

Drawing ref. Nr. : ANS12075-02

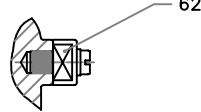
Pos. No.	Part No.	Kit	Qty	Description	Benennung	Designation	Dimensions /Din	Comments	Price
47	11260104		1	Hexagonal screw	Sechskantschraube	Vis hexagonal	M5x10 DIN85 GV		
48	11500003		1	Locking washer	Sicherungsscheibe	Tole-frein	A5.1 DIN6797		
49	12180014		1	Cable shoe	Flachsteckhülse	Cosse-câble	Ø1.5-2.5mm		
50	43070326		1	Seal for DI	Dichtung für DI	Joint pour DI			
51	12180144		1	Round plug	Rundstecker	Fiche ronde	Ø4mm		
52	42130403		1	DI-probe	DI-electrode	Sonde DI			
53	41425032		1	Bracket	Haltewinkel	Butée			
54	11260091		1	Lens Head Screw	Flachkopfschraube	Vis à tête plate	M5x12 DIN85		
55	12120241		1	DI-probe	DI-electrode	Sonde DI	M12	FM	
56	12180144		1	Round plug	Rundstecker	Fiche ronde	Ø4mm		
57	42135000		1	DI-probe	DI-electrode	Sonde DI			
58	11080027		1	Circlip	Sicherungsscheibe	Circlip	Ø7x0.9mm DIN6799		
59	11060014		1	Support washer	Tragscheibe	Rondelle	Ø42x52x2.5 DIN988		
60	11100066		1	Mechanical seal	Gleitringdichtung	Garniture mecanique	Ø20mm	CARBON-CHROME	
61	11070006	AB	1	Circlip	Sicherungsring	Circlip	Ø20x1.2 DIN471		
62	12170027		1	Earth plug	Erdungsanschluß	Prise de terre			
63	43025334		1	Cable EasyFit	Kabel EasyFit	Cable EasyFit	7x1.5 TecWater	10m (W)	
63	43025335		1	Cable EasyFit	Kabel EasyFit	Cable EasyFit	7x1.5 TecWater	20m (W)	
63	43025336		1	Cable EasyFit	Kabel EasyFit	Cable EasyFit	7x1.5 TecWater	30m (W)	
63	43025323		1	Cable EasyFit	Kabel EasyFit	Cable EasyFit	7x1.5 TecWater	10m (D)	
63	43025325		1	Cable EasyFit	Kabel EasyFit	Cable EasyFit	7x1.5 TecWater	20m (D)	
63	43025327		1	Cable EasyFit	Kabel EasyFit	Cable EasyFit	7x1.5 TecWater	30m (D)	
63	43025379		1	Cable EasyFit	Kabel EasyFit	Cable EasyFit	14/7 SOW-A	10m (W)	
63	43025381		1	Cable EasyFit	Kabel EasyFit	Cable EasyFit	14/7 SOW-A	20m (W)	
63	43025382		1	Cable EasyFit	Kabel EasyFit	Cable EasyFit	14/7 SOW-A	30m (W)	
63	43025375		1	Cable EasyFit	Kabel EasyFit	Cable EasyFit	14/7 SOW-A	10m (D)	
63	43025377		1	Cable EasyFit	Kabel EasyFit	Cable EasyFit	14/7 SOW-A	20m (D)	
63	43025378		1	Cable EasyFit	Kabel EasyFit	Cable EasyFit	14/7 SOW-A	30m (D)	
64	11120829		1	O-ring	O-ring	Joint torique	Ø32x3 DIN3771	Viton	
65	12180002		4(7)	Cable shoe	Flachsteckhülse	Cosse-câble		(7) for 7 core cable	
**	62665268	C	1	Not shown on drawing	Nicht auf zeichnung	Il n'est pas au dessin			
	61195083	A	1	Seal kit	Dichtungssatz	Jeu de joint complet			
	61195085	B	1	Seal kit	Dichtungssatz	Jeu de joint complet		Viton	



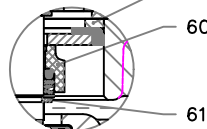
DI Std. Euro/USA



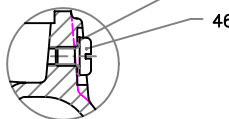
EXTERNAL EARTH PLUG EX. (EECS)



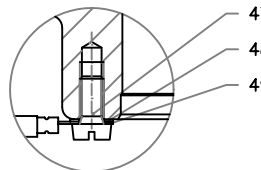
2nd Mech. seal



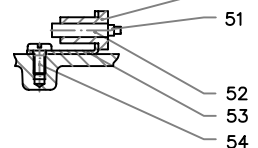
OIL SCREW



EARTH CONNECTION



DI EX EECS



DI FM

