

**BBT/BBT-D Two Stage Radially Split Between Bearings Process Pump ISO 13709 (API 610)**

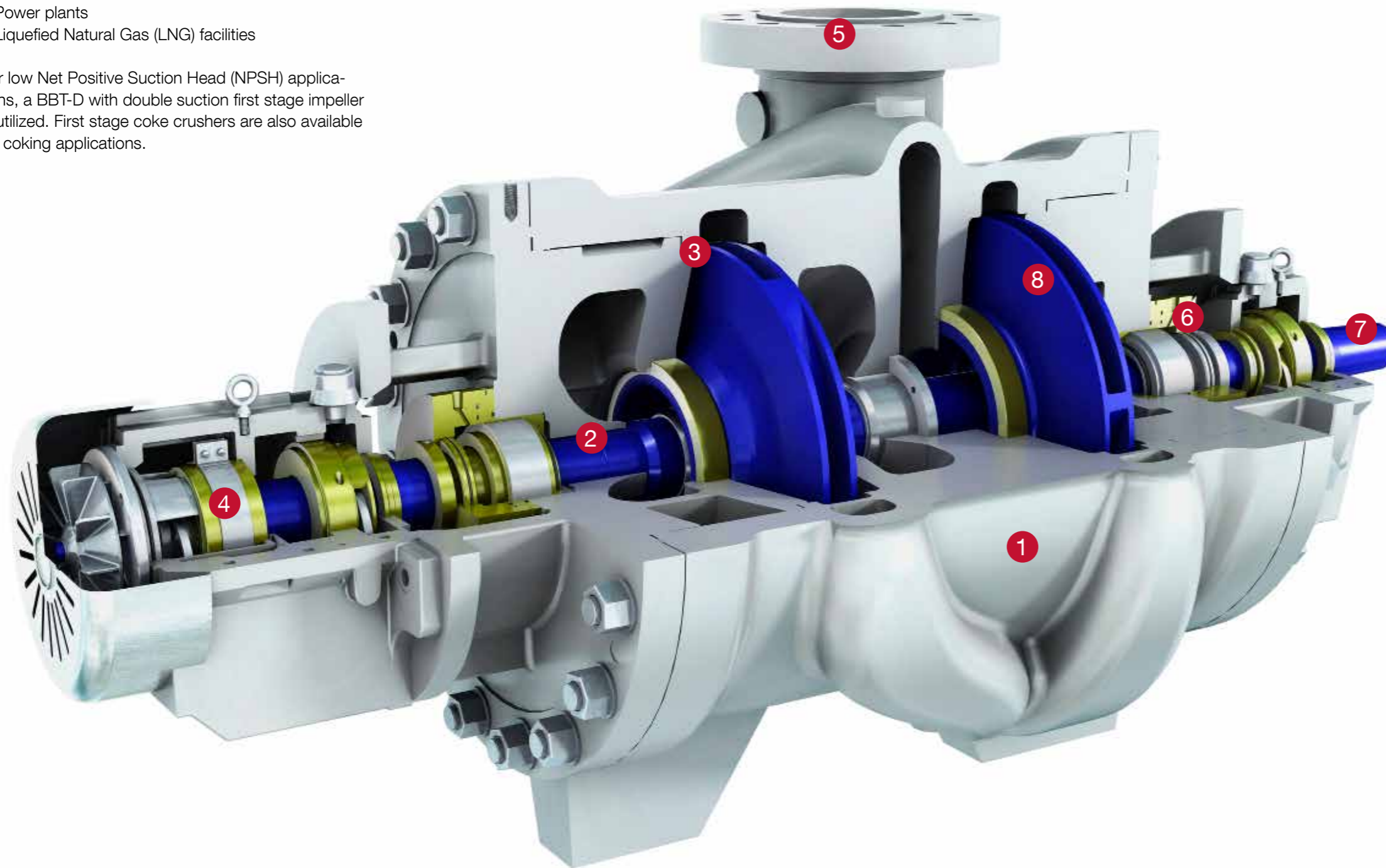


## Main Applications

The BBT and BBT-D pumps are designed for heavy duty, high pressure and high temperature applications. These applications range from light hydrocarbons at low temperatures, to corrosive fluids, coker furnace charge, vacuum bottoms and other services at high or low temperatures found in:

- Refineries
- Petrochemical plants
- Power plants
- Liquefied Natural Gas (LNG) facilities

For low Net Positive Suction Head (NPSH) applications, a BBT-D with double suction first stage impeller is utilized. First stage coke crushers are also available for coking applications.



## Features and Benefits

- 1 Heavy radially split casing**
  - Easily handles 2 times API nozzle loads
  - Designed for high pressure and temperature
- 2 Stiff shaft design**
  - Increases mechanical seal life
  - Lowers the deflection leading to less wear
  - Allows reliable rotor dynamic performance
  - Improves vibration
- 3 CFD hydraulics**
  - Opposed impellers balance axial loads
  - Efficient and reliable hydraulic performance in wide range of services
- 4 Bearings**
  - Ball-ball, sleeve-ball, or sleeve-pivot shoe bearings for long life
- 5 Flanges**
  - 300# or 600# as required
- 6 Seals chambers**
  - Balance line causes both seal chambers to be near suction pressure for longer seal life
- 7 Tapered shaft**
  - Eases seal maintenance
- 8 Impellers**
  - Enclosed and dynamically balanced for improved efficiency and reliability

# BBT/BBT-D Two Stage Radially Split Between Bearings Process Pump ISO 13709 (API 610)



Oil and gas



Hydrocarbon processing



Power generation



Pulp and paper



General industry



Chemical processing

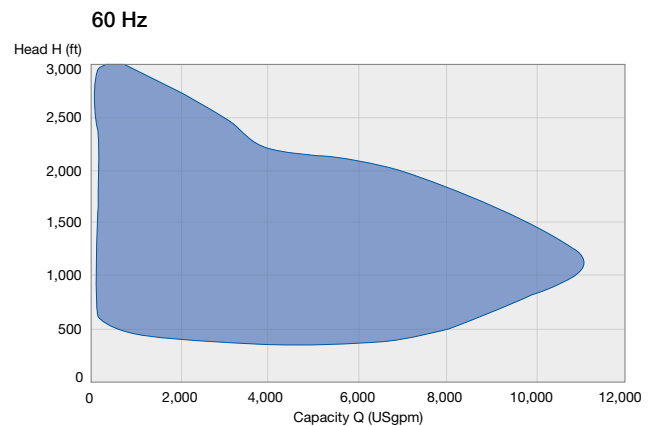
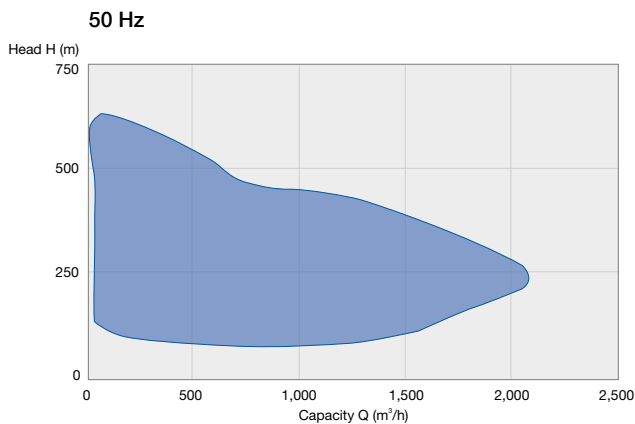


Water and wastewater

## Operating data

50 Hz		60 Hz
50 to 250 mm	Pump sizes	2 to 10 in
up to 2,000 m <sup>3</sup> /h	Capacities	up to 10,000 USgpm
up to 740 m	Heads	up to 2,400 ft
up to 100 bar	Pressures	up to 1,480 psi
up to 425 °C	Temperatures	up to 800 °F

## Performance ranges



## Materials

Pump part	Material
ISO13709 (API 610)	S-6, C-6, A-8, D-1, D-2 and 317L

# We Do What We Say

## Customer partnership

- We are **reliable partners**
- We provide a **high level of service**
- We **make our customers more competitive**



## Committed people

- We drive **accountability**
- We are **open and transparent**
- We are **team players**



## Operational excellence

- We **focus on results**
- We take **initiative** and work within **established processes**
- We **act safely**



# A Global Specialist at Your Doorstep

Sulzer serves clients worldwide through a network of over 150 production and service sites and has a strong footprint in emerging markets.



● Sulzer headquarters,  
Winterthur, Switzerland



[www.sulzer.com](http://www.sulzer.com)

E00585 en (2) 5.2015 (1,000), Copyright © SULZER Ltd, 2015

This brochure is a general presentation. It does not provide any warranty or guarantee of any kind. Please, contact us for a description of the warranties and guarantees offered with our products. Directions for use and safety will be given separately. All information herein is subject to change without notice.