

**SULZER**

Massblatt XFP 80E-CB1 Nassinstallation  
 Dimension sheet WET-WELL Installation  
 Dimensioni installazione sommersa  
 Hoja de dimensiones instalación sumergida  
 Plan d'encombrement Installation noyee

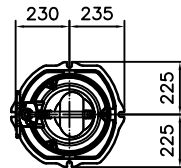
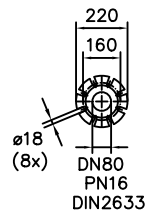
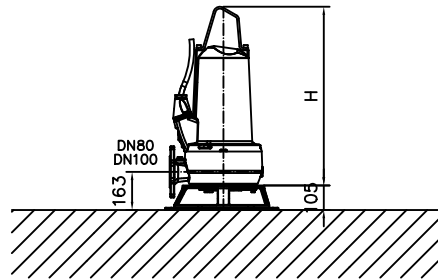
No: AN-M.22.563 -04  
 Drawn: 11.05.09 / D.Wheeler  
 Issue Date: 24/03/2016  
 Änderungen vorbehalten  
 Technical changes reserved  
 Con riserva di modifiche  
 Con reserva de modificaciones  
 Sous réserve de modification

**50 Hz****S.I.**

Typ Type Tipo	Gewicht Weight Poids Peso (kg)	H (mm)
PE 70/2	160	694
PE 110/2	190	764

**60 Hz**

Typ Type Tipo	Gewicht Weight Poids Peso (kg)	H (mm)
PE 125/2	190	764



Gewicht: Behälter, Pumpe, Bodenstützgestell und Kabel (50Hz = 10m; 60Hz = 15m)  
 Weight: Includes pump, skirtbody and cable (50Hz = 10m; 60Hz = 15m)  
 Peso: Incluye bomba, base soporte y cable (50Hz = 10m; 60Hz = 15m)  
 Peso: Include: pompa, base d'appoggio e cavo (50Hz = 10m; 60Hz = 15m)  
 Poids: Incluant la pompe, le trepied et le câble (50Hz = 10m; 60Hz = 15m)

Guss-Allgemeintoleranzen nach DIN1680 - GTB16  
 General tolerances for castings in acc. to DIN1680-GTB16  
 Tolleranze generali delle fusioni secondo DIN1680-GTB16  
 Tolerancias generales para la fundición seg. de DIN1680-GTB16  
 Tolérance générale de la fonderie selon DIN1680-GTB16

**SULZER**

Massblatt XFP 80E-CB1 Nassinstallation  
 Dimension sheet WET-WELL Installation  
 Dimensioni installazione sommersa  
 Hoja de dimensiones instalación sumergida  
 Plan d'encombrement Installation noyee

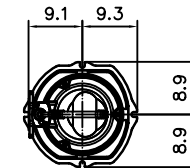
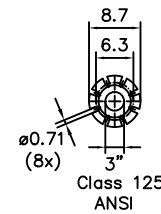
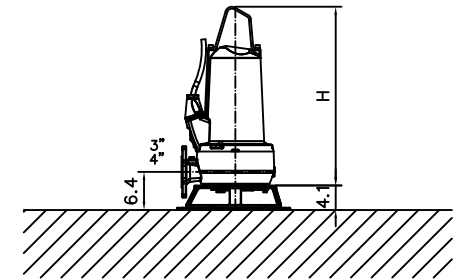
No: AN-M.22.563 -04  
 Drawn: 11.05.09 / D.Wheeler  
 Issue Date: 24/03/2016  
 Änderungen vorbehalten  
 Technical changes reserved  
 Con riserva di modifiche  
 Con reserva de modificaciones  
 Sous réserve de modification

**50 Hz****U.S.**

Typ Type Tipo	Gewicht Weight Poids Peso (lbs)	H (")
PE 70/2	353	27.3
PE 110/2	419	30.1

**60 Hz**

Typ Type Tipo	Gewicht Weight Poids Peso (lbs)	H (")
PE 125/2	419	30.1



Gewicht: Behälter, Pumpe, Bodenstützgestell und Kabel (50Hz = 10m; 60Hz = 15m)  
 Weight: Includes pump, skirtbody and cable (50Hz = 10m; 60Hz = 15m)  
 Peso: Incluye bomba, base soporte y cable (50Hz = 10m; 60Hz = 15m)  
 Peso: Include: pompa, base d'appoggio e cavo (50Hz = 10m; 60Hz = 15m)  
 Poids: Incluant la pompe, le trepied et le câble (50Hz = 10m; 60Hz = 15m)

Guss-Allgemeintoleranzen nach DIN1680 - GTB16  
 General tolerances for castings in acc. to DIN1680-GTB16  
 Tolleranze generali delle fusioni secondo DIN1680-GTB16  
 Tolerancias generales para la fundición seg. de DIN1680-GTB16  
 Tolérance générale de la fonderie selon DIN1680-GTB16