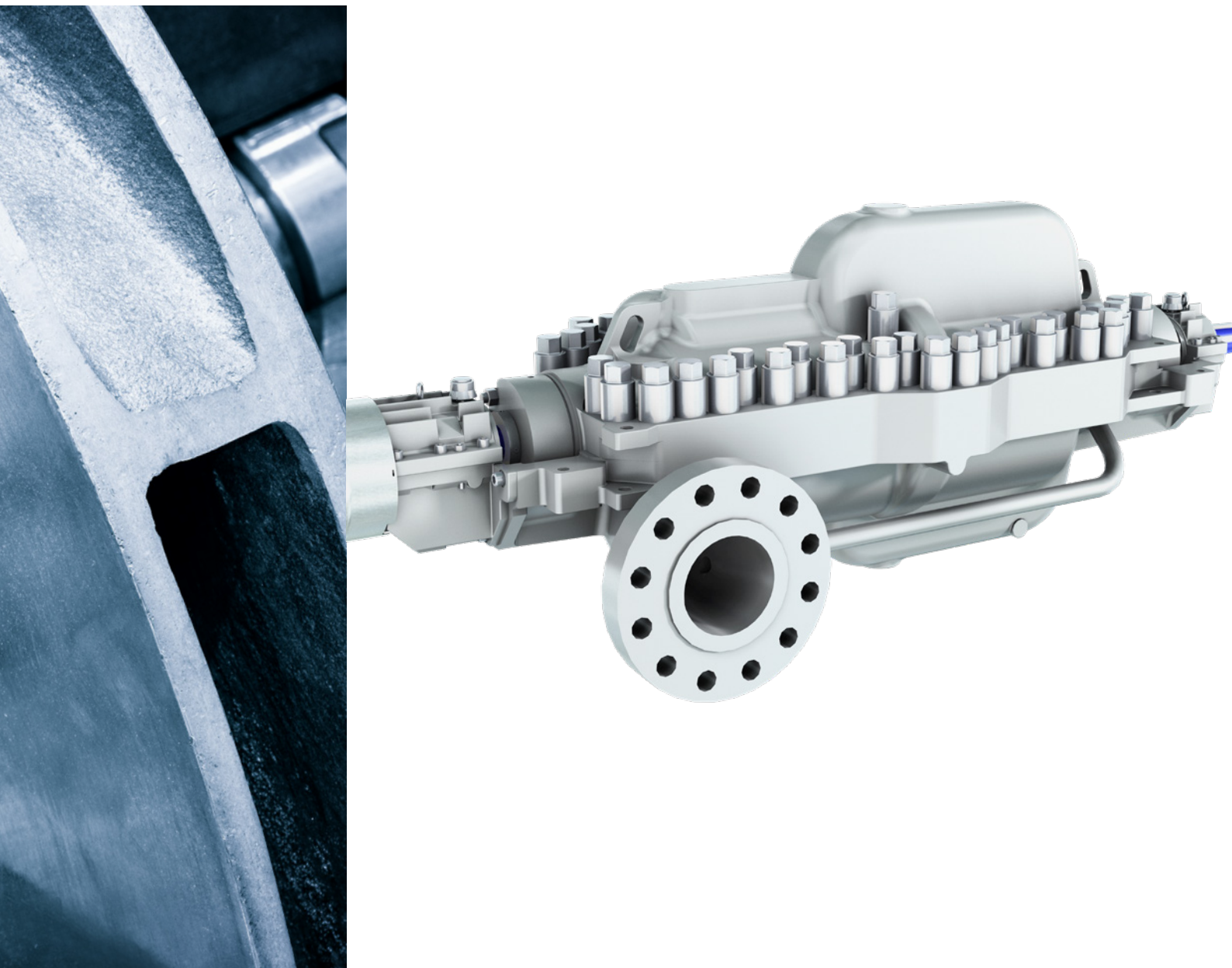
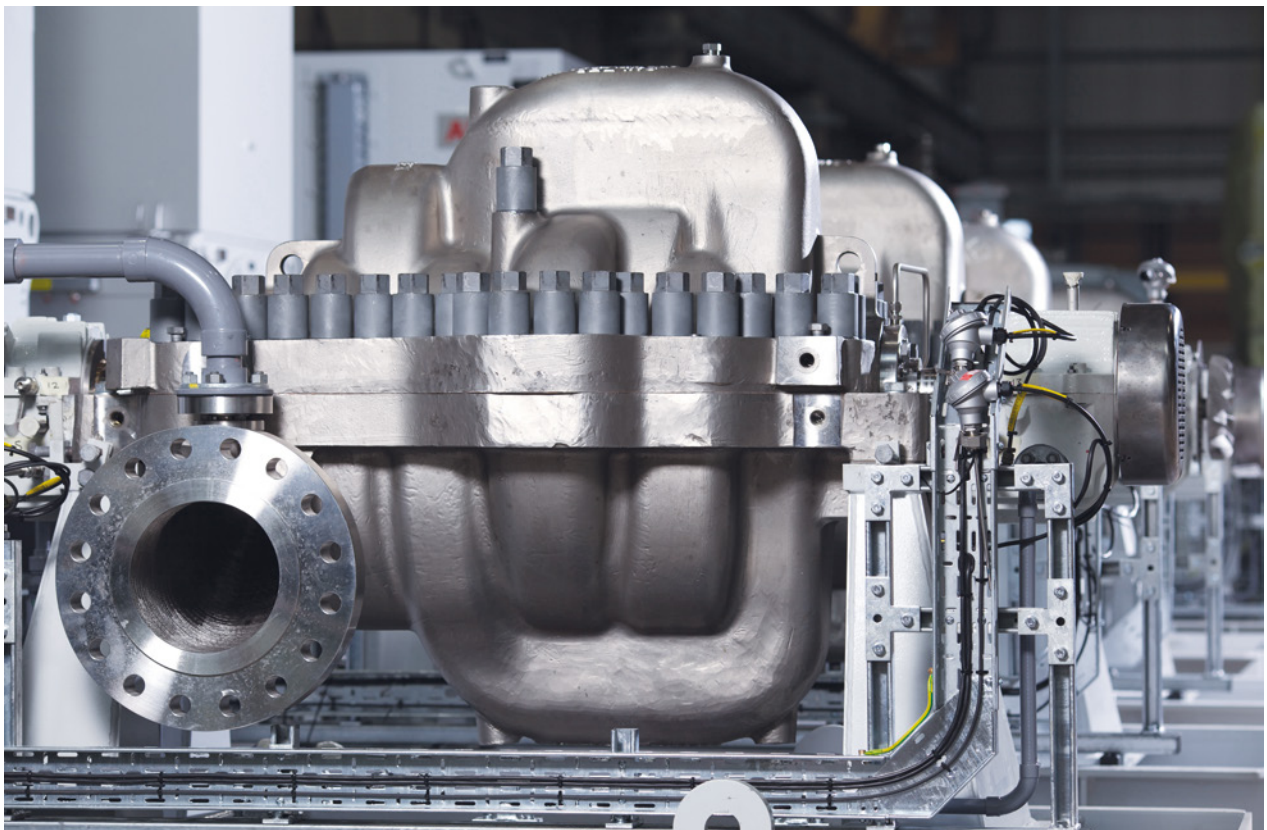
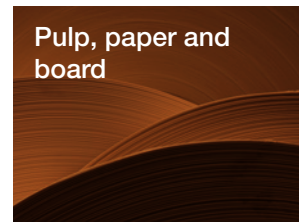


MSD axially split multistage pump



Main industries and applications

- Boiler feed in all industries; auxiliary feed in nuclear power
- Reverse osmosis feed
- Offshore crude oil shipping
- Refined product pipeline
- Supercritical Liquefied Petroleum Gas (LPG), Ethylene and CO₂ compressible services down to 0.25 sp.gr.



Features and benefits

1 Impellers

- Shrink fit, precision cast, dynamically balanced and individually secured

2 Axially split casing

- Simplifies rotor balancing, inspection and installation, case passageway inspection and modification, and spare rotor retrofits
- Support is near centerline for alignment
- Full range of design pressures to suit applications

3 Large diameter shaft

- Stepped for ease of assembly
- Sized to satisfy rotor dynamics and power transmission with worn clearances
- Optimized for hydraulic performance

4 Double volute construction

- Minimum radial thrust for less shaft deflection and less bearing loading

5 Bearings

- Ball radial and 7300 series ball thrust bearings are standard; sleeve/ball and sleeve/pivot shoe bearings are optional. INPROTM isolators are standard

6 Seal chambers

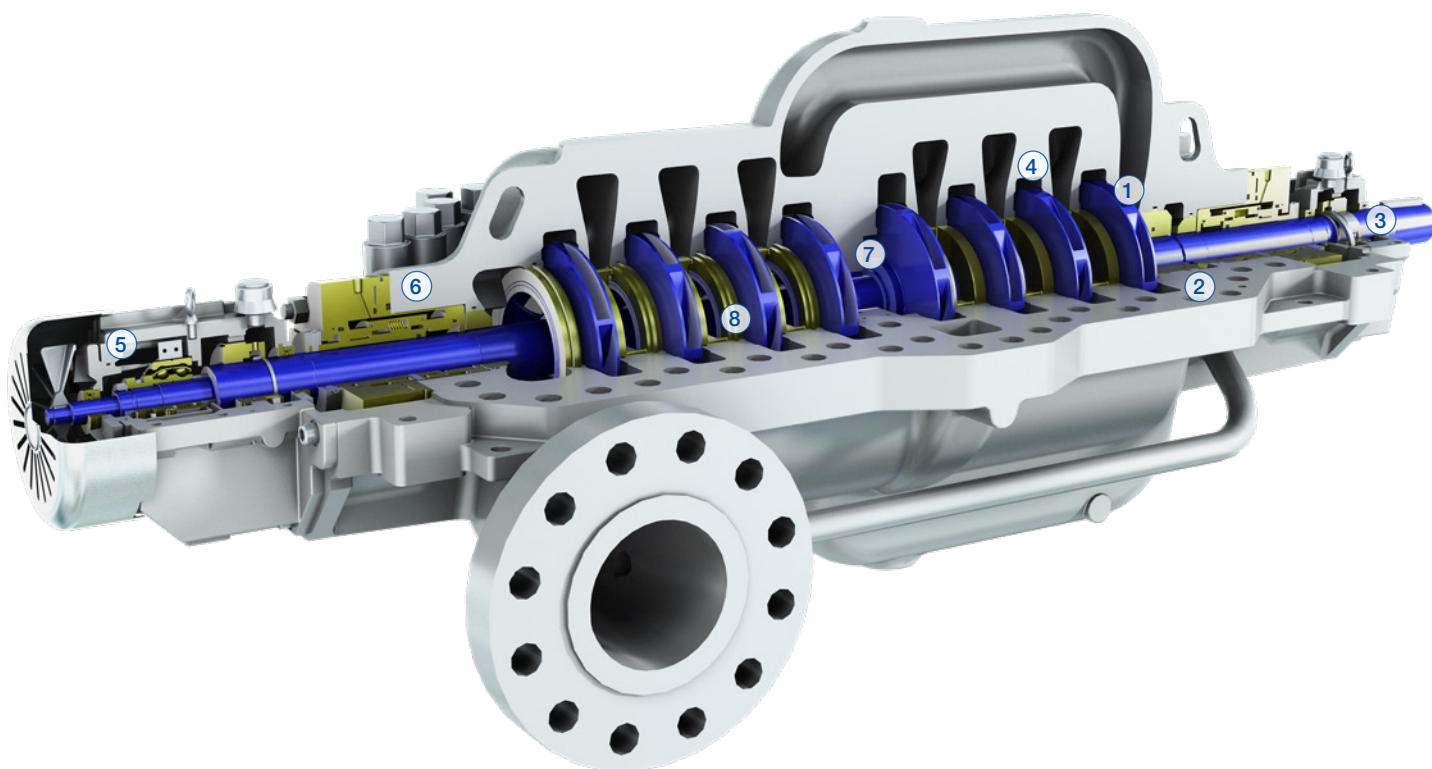
- Easy access for maintenance
- Space for tandem and double mechanical seals
- Compliance with ISO-13709 (API610) dimensions

7 Split center bushing

- Facilitates rotor dynamic balance, inspection, removal and replacement

8 Replaceable wear rings

- Pinned and axially retained impeller and case wear rings are standard



Specifications

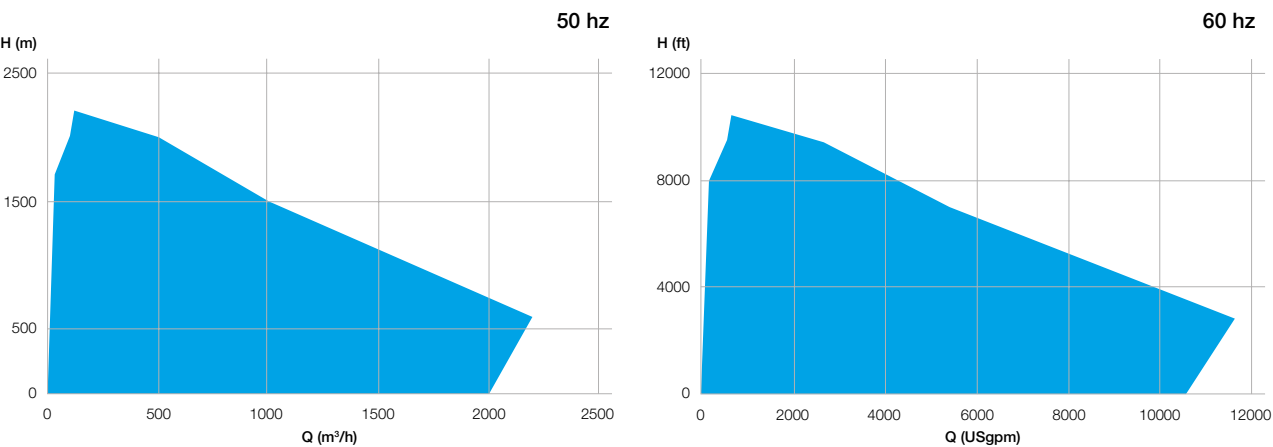
Material options

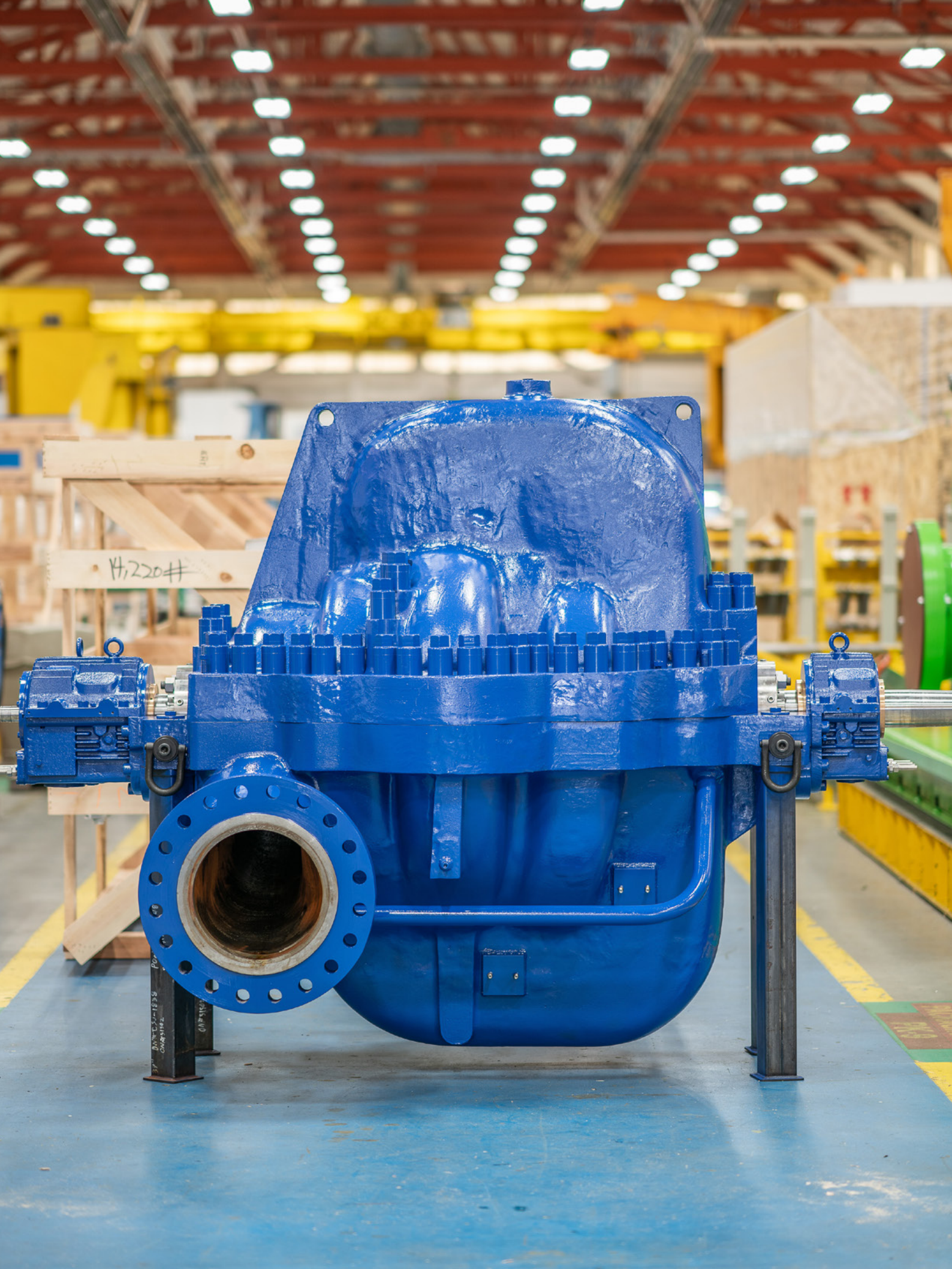
API 610 material codes: S-5, S-6, S-8, C-6, A-8, D-1, D-2

Operating data

| | 50 Hz | 60 Hz |
|------------------------|------------------|--------------------|
| Pump sizes | 80 to 400 mm | 3 to 16 in. |
| Capacities | up to 3'200 m³/h | up to 14'000 USgpm |
| Heads | up to 2'900 m | up to 9'500 ft. |
| Pressures | up to 300 bar | up to 4'400 psi |
| Temperatures | up to 205°C | up to 400°F |
| Max. speed of rotation | over 6'000 rpm | over 6'000 rpm |

Performance range





The Sulzer Flow division keeps your processes flowing. Wherever fluids are treated, pumped, or mixed, we deliver highly innovative and reliable solutions for the most demanding applications.

The Flow division specializes in pumping solutions specifically engineered for the processes of our customers. We provide pumps, agitators, compressors, grinders, screens and filters developed through intensive research and development in fluid dynamics and advanced materials. We are a market leader in pumping solutions for water, oil and gas, power, chemicals and most industrial segments.

E00577 en 11.2024, Copyright © Sulzer Ltd 2024

This brochure is a general presentation. It does not provide any warranty or guarantee of any kind. Please, contact us for a description of the warranties and guarantees offered with our products. Directions for use and safety will be given separately. All information herein is subject to change without notice.

