

JVCRv high pressure vertical can LNG pumps



Main applications

JVCRv's are found primarily in LNG (Liquefied Natural Gas) pressure boosting applications. They are also specified for other cold temperature applications such as LPG, ethylene and propylene services.

Features and benefits

External motor

- Easily accessible and repairable at low cost

Sulzer's unique J-Unit: modified plan 53C and Sulzer isolation chamber and seal chamber

- Allows use of standard back to back mechanical seal components at cryogenic temperatures

Standard API 682 mechanical seal

Easily repairable with low cost components

No inducer required

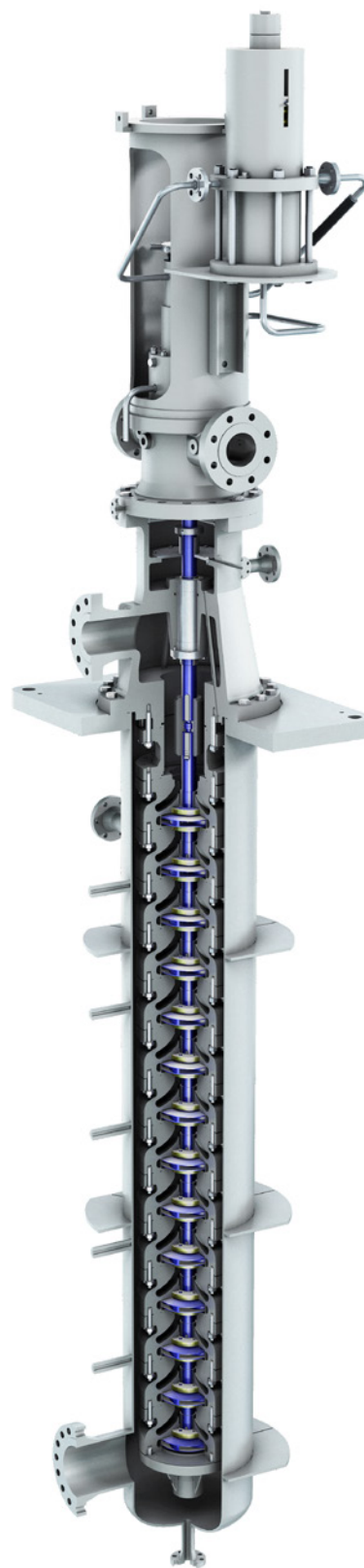
- Stable operation over wide range

Optimized stage construction

- High pump and motor efficiency

Optional double suction first stage

- Lower Net Positive Suction Head required (NPSHr)



Specifications

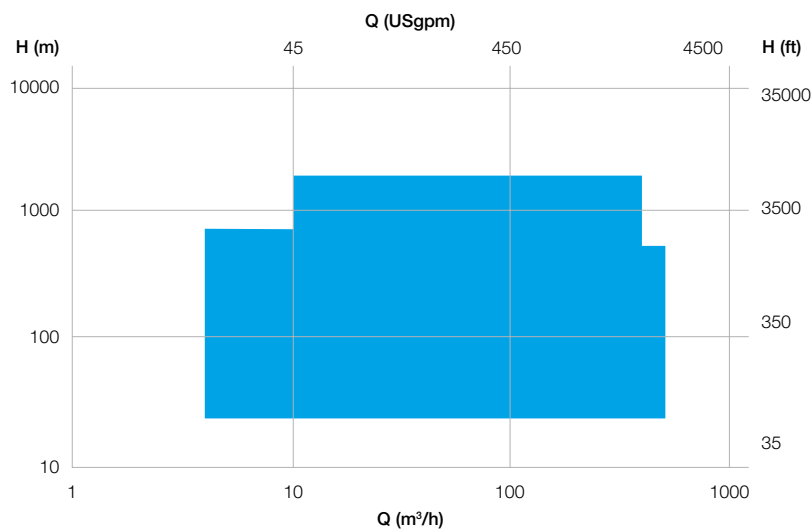
Material options

API 610: Cryogenic materials such as aluminum, nickel aluminum bronze and 316L SS are provided to meet customer specifications

Operating data

	50 Hz	60 Hz
Pump sizes	500 mm	20 in.
Capacities	400 m ³ /h	2'100 USgpm
Heads	1'600 m	7'500 ft.
Pressures	150 bar	2'200 psi
Temperatures	-200 to 200°C	-330 to 400°F

Performance range



The Sulzer Flow division keeps your processes flowing. Wherever fluids are treated, pumped, or mixed, we deliver highly innovative and reliable solutions for the most demanding applications.

The Flow division specializes in pumping solutions specifically engineered for the processes of our customers. We provide pumps, agitators, compressors, grinders, screens and filters developed through intensive research and development in fluid dynamics and advanced materials. We are a market leader in pumping solutions for water, oil and gas, power, chemicals and most industrial segments.

E00625 en 12.2024, Copyright © Sulzer Ltd 2024

This brochure is a general presentation. It does not provide any warranty or guarantee of any kind. Please, contact us for a description of the warranties and guarantees offered with our products. Directions for use and safety will be given separately. All information herein is subject to change without notice.

