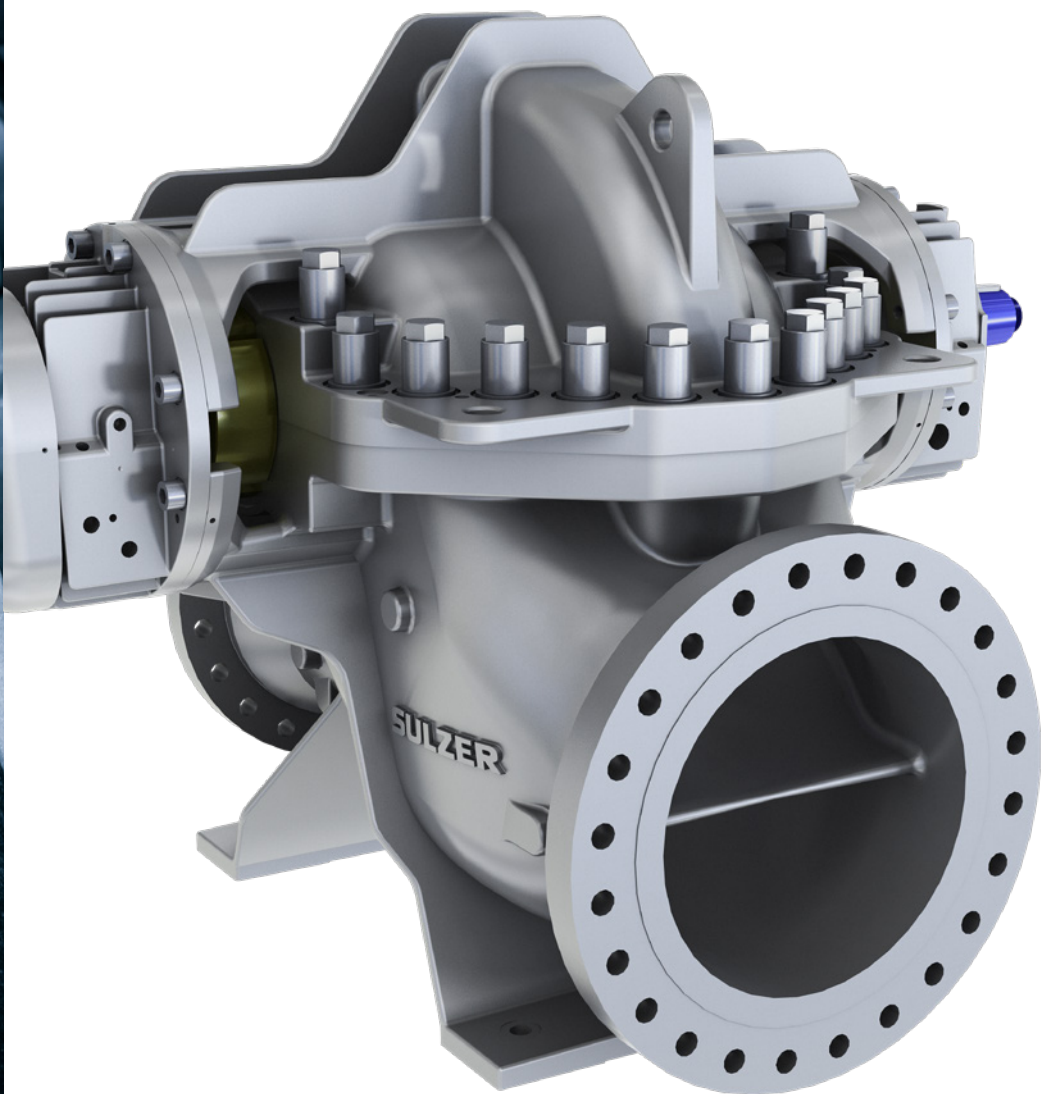


SULZER

Pumps and pumping systems

HSA API 610 type BB1 axially split single stage double suction pump



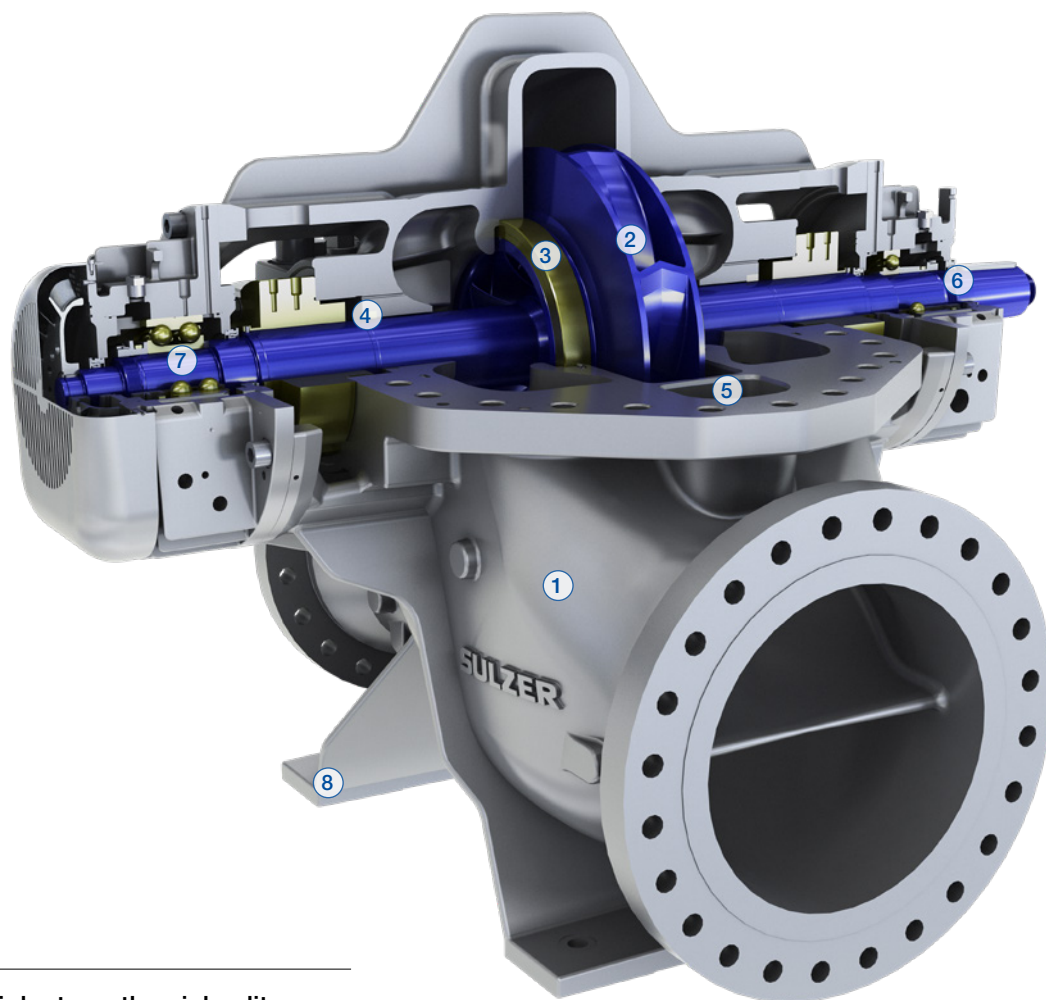
Main industries and applications

The HSA API 610 Type BB1 product line is designed for use in the oil and gas industry. Applications include tank farm transfer, pipeline, pressure boosting, cooling water, and closed cycle cooling.

The Sulzer HSA pump range bring API 610 nozzle loads, seal chambers, bearing systems and performance features to what were normally considered general service pumps.



Features and benefits



1 High strength axial split casing

- 150# and 300# flange options
- Two times API 610 table 5 nozzle load capability

2 Double suction impeller

- Balanced axial thrust
- Optimum geometry provides high efficiency, low NPSH, and quiet running over a wide operating range
- Balanced to ISO 1940-1 G2.5

3 Wear rings

- Replaceable case rings as standard
- Replaceable impeller rings or integral wear surface depending on material
- Simple, low cost efficiency renewal

4 API 610 Table 7 seal chambers

- API 682 single or dual cartridge type mechanical seals
- API 682 seal support systems

5 Double volute casing on larger sizes

- Minimizes shaft deflection
- Longer mechanical seal life

6 Large shaft diameter with minimum bearing span

- More power capacity
- Improved mechanical seal life

7 High capacity bearing assembly

- Ball-ball, sleeve-ball and sleeve-pivot shoe bearings available
- Fan or water cooled options

8 Heavy duty baseplates

- Grouted or ungrouted design
- Vertical arrangement (HSAV) for limited deck space applications

Specifications

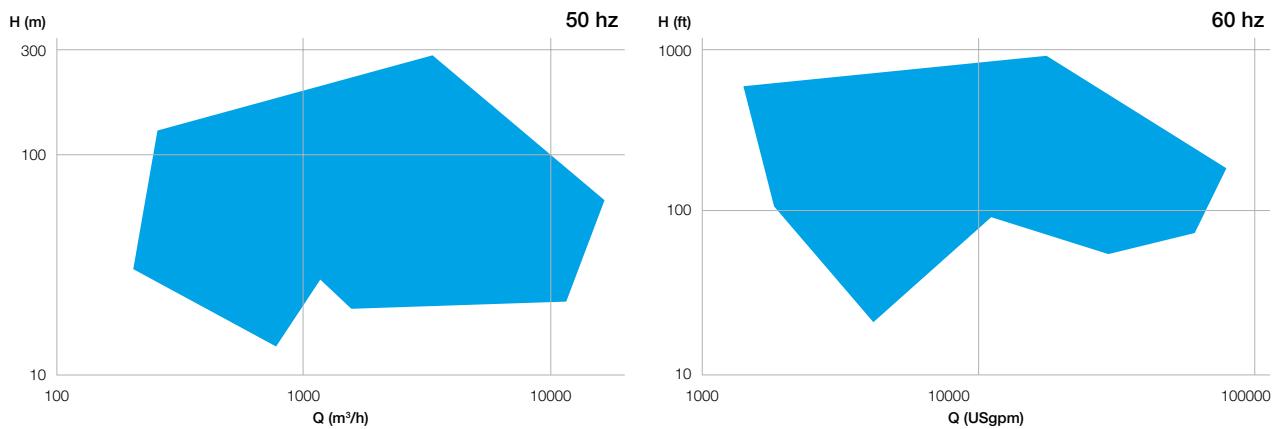
Material options

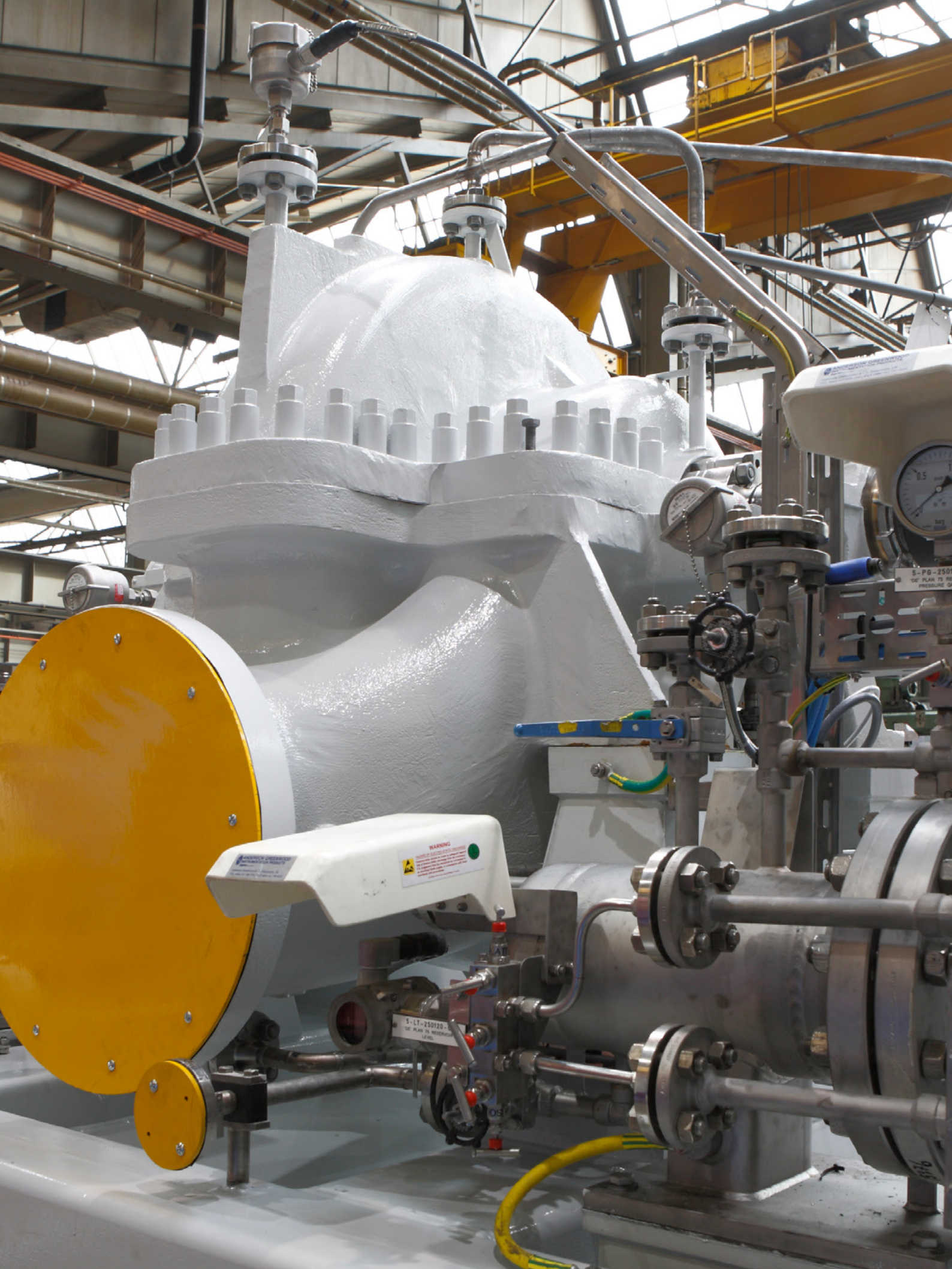
API 610 material codes: S-4, S-5, S-6, S-8, A-8, D-1, D-2

Operating data

	50 Hz	60 Hz
Pump sizes	6" to 32" nozzles	6" to 32" nozzles
Capacities	up to 18'000 m ³ /h	up to 80'000 USgpm
Heads	up to 260 m	up to 850 ft.
Pressures	up to 34 bar	up to 490 psi
Temperatures	up to 140°C	up to 280°F
Speeds	up to 3'600 rpm	up to 3'600 rpm

Performance range





WARNING
DANGER OF HIGH PRESSURE
DO NOT OPERATE WITHOUT PROTECTIVE DEVICES
DO NOT OPERATE WITHOUT PROTECTIVE DEVICES
DO NOT OPERATE WITHOUT PROTECTIVE DEVICES

5-LT-250120
DE PLAN 79 RESERVOIR
1/2018

5-PG-250120
DE PLAN 79 RESERVOIR
1/2018

0.5
bar

5-PG-250120
DE PLAN 79 RESERVOIR
1/2018

The Sulzer Flow division keeps your processes flowing. Wherever fluids are treated, pumped, or mixed, we deliver highly innovative and reliable solutions for the most demanding applications.

The Flow division specializes in pumping solutions specifically engineered for the processes of our customers. We provide pumps, agitators, compressors, grinders, screens and filters developed through intensive research and development in fluid dynamics and advanced materials. We are a market leader in pumping solutions for water, oil and gas, power, chemicals and most industrial segments.

E10542 en 11.2024, Copyright © Sulzer Ltd 2024

This brochure is a general presentation. It does not provide any warranty or guarantee of any kind. Please, contact us for a description of the warranties and guarantees offered with our products. Directions for use and safety will be given separately. All information herein is subject to change without notice.

