

STR Vertical Turbine Pump



Main Applications

STR pumps can be used in the following fields:

- Desalination (sea water intake, brine backwash, etc.)
- Irrigation
- Water treatment
- Water transport
- Circulation and cooling water services in power plants
- Fish farms
- Flood control
- Dry docks

Features and Benefits

- 1 Closed impellers with balancing holes as standard, with open impeller for higher specific speeds**
 - Offer extraordinary hydraulic performance and high efficiency levels
- 2 Bowl and impeller removable wear rings (front and rear)**
 - Ensure proper maintenance and longer pump lifecycle
- 3 Oversized integrally mounted bearing housing with axial and radial bearings**
 - Ensures trouble free operation
- 4 Shaft seal by gland packing**
 - Provides reliable sealing and easy maintenance
- 5 Above ground discharge head as standard; discharge elbow below foundation available upon request**
 - Ensures a proper access to coupling and sealing areas, and provides the required stiffness to complete pump & motor set
- 6 Shaft sleeves at pump rotor wear parts**
 - For shaft wear protection
- 7 Rubber radial guide shaft bearing**
 - Ensures proper performance when pumping slightly contaminated liquids
- 8 Line shaft connections with muff coupling able to transmit all the driver torque to the complete pump rotor**
 - No possible shaft extension or galling could come across due to reverse sense of rotation

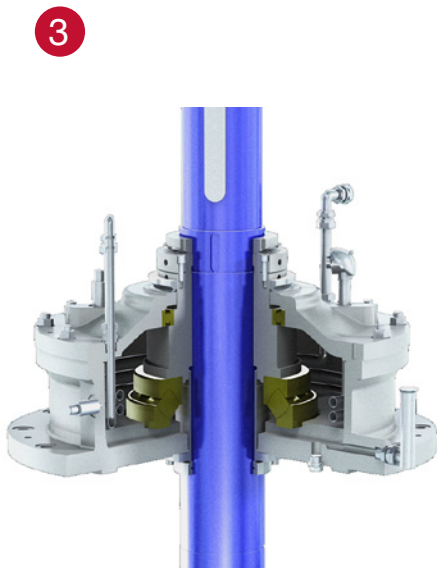
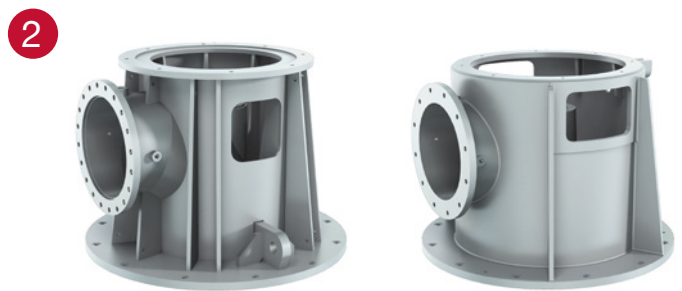


Optional Features

The following optional features can be supplied:

- 1 Between bearings impeller design with tail bearing at suction bell cross
- 2 Cast or fabricated discharge head
- 3 Thrust pod cooling coil with water inlet and outlet connections for high temperature applications
- 4 API and non-API mechanical seal shaft sealing
- 5 Column with shaft protection tube for dirt or abrasive liquids

Other tailor-made designs are available upon request.



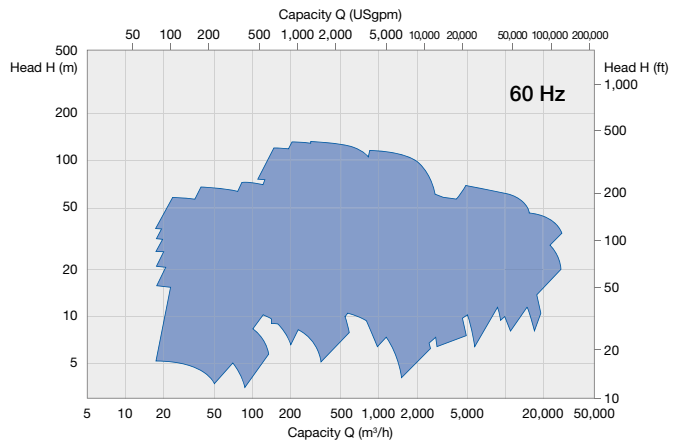
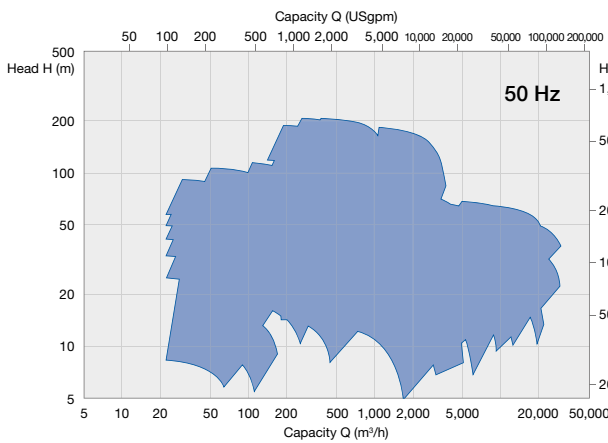
STR Vertical Turbine Pump



Operating data

50 Hz		60 Hz
up to DN1400	Pump sizes	up to 56 in
up to 22,000 m ³ /h	Capacities	up to 97,000 USgpm
up to 200 m	Heads	up to 420 ft
up to 25 bar	Pressures	up to 362 psi
up to 65°C	Temperatures	up to 149°F

Performance ranges



Materials

Pump part	Material
Bowls	Cast Iron, Bronze, Stainless Steel, Duplex, Superduplex
Impeller	Cast Iron, Bronze, Stainless Steel, Duplex, Superduplex
Shaft	Carbon Steel, Stainless Steel, Duplex, Superduplex
Column pipe	Carbon Steel, Duplex, Superduplex

We Do What We Say

Customer partnership

- We are **reliable partners**
- We provide a **high level of service**
- We **make our customers more competitive**



Committed people

- We drive **accountability**
- We are **open and transparent**
- We are **team players**



Operational excellence

- We **focus on results**
- We take **initiative** and work within **established processes**
- We **act safely**



A Global Specialist at Your Doorstep

Sulzer serves clients worldwide through a network of over 150 production and service sites and has a strong footprint in emerging markets.



● Sulzer headquarters,
Winterthur, Switzerland



www.sulzer.com

E10130 en 5.2016, Copyright © Sulzer Ltd 2016

This brochure is a general presentation. It does not provide any warranty or guarantee of any kind. Please, contact us for a description of the warranties and guarantees offered with our products. Directions for use and safety will be given separately. All information herein is subject to change without notice.