

SULZER	Massblatt XFP 150G-VX Nassinstallation	No: AN-M.22.650 - 03
	Dimension sheet WET-WELL Installation	Drawn: 25/11/10 D.Wheelan
	Dimensioni Installazione sommersa	Issue Date: 09/05/2013
	Hoja de dimensiones instalación sumergida	Zänderungen vorbehalten
	Plan d'encombrement Installation noyee	Technical changes reserved Con riserva di modifiche Con reserva de modificaciones Sous réserve de modification

50 Hz

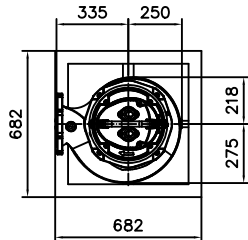
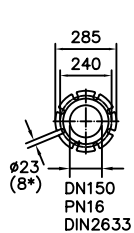
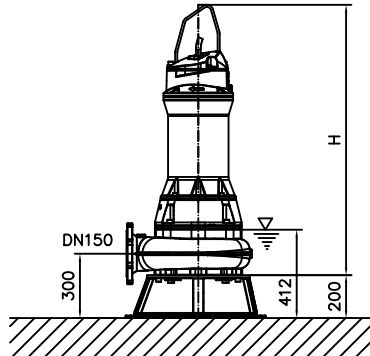
S.I.

Typ Type Tipo	Gewicht Weight Poids N.C.J. (kg)	Gewicht Weight Poids W.C.J. (kg)	Height H (mm)
PE 110/4	352	402	1279
PE 140/4	352	402	1279
PE 160/4	382	422	1279
PE 185/4	382	422	1279

60 Hz

Typ Type Tipo	Gewicht Weight Poids N.C.J. (kg)	Gewicht Weight Poids W.C.J. (kg)	Height H (mm)

N.C.J. = No Cooling Jacket
W.C.J. = With Cooling Jacket



Gewicht: Beinhaltet Pumpe, Bodenstützgestell und Kabel (50Hz = 10m; 60Hz = 15m)
Weight: includes pump, skirbase and cable (50Hz = 10m; 60Hz = 15m)
Peso: Incluye bomba, base soporte y cable (50Hz = 10m; 60Hz = 15m)
Peso: include: pompa, base d'appoggio e cavo (50Hz = 10m; 60Hz = 15m)
Poids: incluant la pompe, le trépied et le cable (50Hz = 10m; 60Hz = 15m)

Guss-Allgemeintoleranzen nach DIN1680 - GTB16
General tolerances for castings in acc. to DIN1680-GTB16
Tolleranze generali delle fusioni secondo DIN1680-GTB16
Tolerancias generales para la fundición seg. de DIN1680-GTB16
Tolérance générale de la fonderie selon DIN1680-GTB16

SULZER	Massblatt XFP 150G-VX Nassinstallation	No: AN-M.22.650 - 03
	Dimension sheet WET-WELL Installation	Drawn: 25/11/10 D.Wheelan
	Dimensioni Installazione sommersa	Issue Date: 09/05/2013
	Hoja de dimensiones instalación sumergida	Zänderungen vorbehalten
	Plan d'encombrement Installation noyee	Technical changes reserved Con riserva di modifiche Con reserva de modificaciones Sous réserve de modification

50 Hz

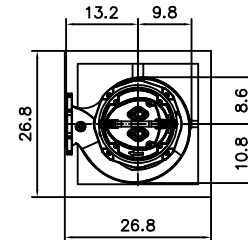
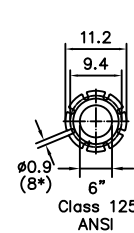
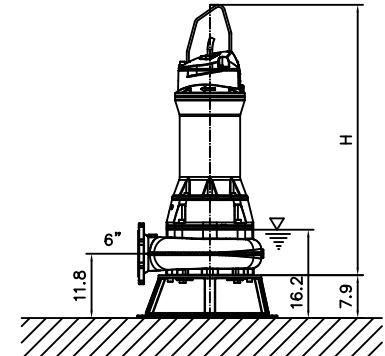
U.S.

Typ Type Tipo	Gewicht Weight Poids N.C.J. (lbs)	Gewicht Weight Poids W.C.J. (lbs)	Height H (")
PE 110/4	777	887	50.4
PE 140/4	777	887	50.4
PE 160/4	843	931	50.4
PE 185/4	843	931	50.4

60 Hz

Typ Type Tipo	Gewicht Weight Poids N.C.J. (lbs)	Gewicht Weight Poids W.C.J. (lbs)	Height H (")

N.C.J. = No Cooling Jacket
W.C.J. = With Cooling Jacket



Gewicht: Beinhaltet Pumpe, Bodenstützgestell und Kabel (50Hz = 10m; 60Hz = 15m)
Weight: includes pump, skirbase and cable (50Hz = 10m; 60Hz = 15m)
Peso: Incluye bomba, base soporte y cable (50Hz = 10m; 60Hz = 15m)
Peso: include: pompa, base d'appoggio e cavo (50Hz = 10m; 60Hz = 15m)
Poids: incluant la pompe, le trépied et le cable (50Hz = 10m; 60Hz = 15m)

Guss-Allgemeintoleranzen nach DIN1680 - GTB16
General tolerances for castings in acc. to DIN1680-GTB16
Tolleranze generali delle fusioni secondo DIN1680-GTB16
Tolerancias generales para la fundición seg. de DIN1680-GTB16
Tolérance générale de la fonderie selon DIN1680-GTB16