

Pump Controller Type ABS PC 441 - with ABS AquaProg



AquaProg is a Windows based software specially made for setting and monitoring of Sulzer substations.

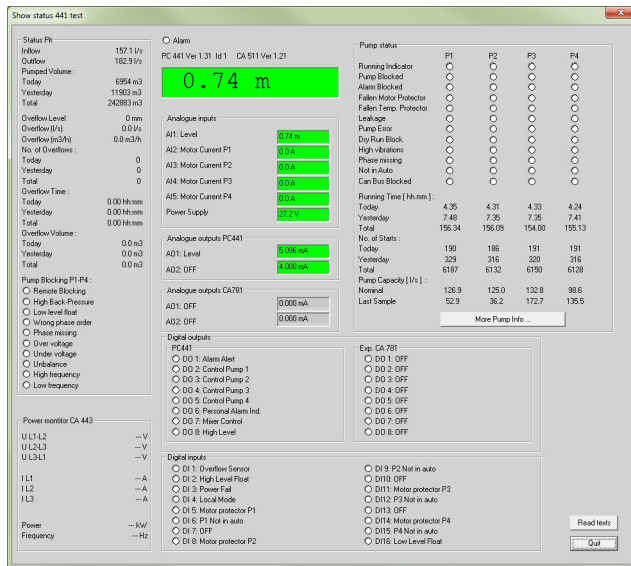
Communication with the controller is established via RS 232, USB or Modem (analogue or GPRS) connection between substation and computer.

Features

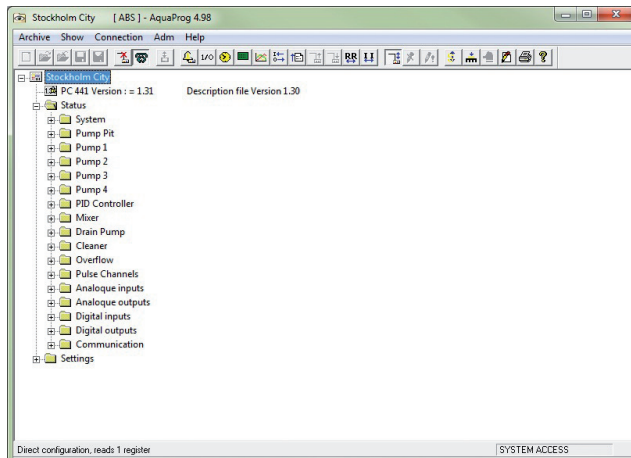
- Configuring substation PC 441 together with CA 441 - CA 443
- Checking and acknowledging alarms
- Checking events
- Collecting log data
- Showing the display and LED of the substation
- Showing the status of the in- and outputs of the substation
- Collecting and sending the configuration data of the substation
- Substation software upgrade



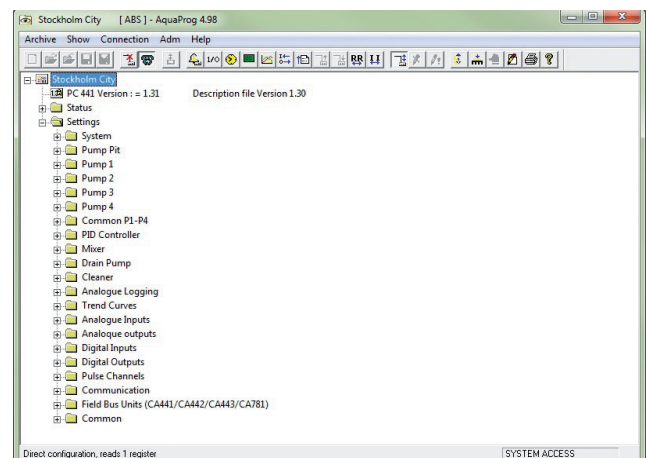
Overview picture in AquaProg for the PC 441 concept



Example of a status overview screen in AquaProg for PC 441



Example of a settings overview screen in AquaProg for PC 441



www.sulzer.com

PC 441 with AquaProg en (12.2016), Copyright © Sulzer Ltd 2016

This document does not provide a warranty or guarantee of any kind. Please contact us for a description of the warranties and guarantees offered with our products. Directions for use and safety will be given separately. All information herein is subject to change without notice.