

Graphical Operator Interface Type ABS CA 511

SULZER

The graphical operator interface type ABS CA 511 is used in combination with the PC 441 pump controller for operation and configuration.

The operator interface communicates and power supplies through the CAN-bus. The graphical display is of a TFT type with a 480 x 272 pixels resolution and also fitted with 28 keys for easy operation and configuration of the PC 441 unit. The graphical user interface enables an easy and user friendly operation.

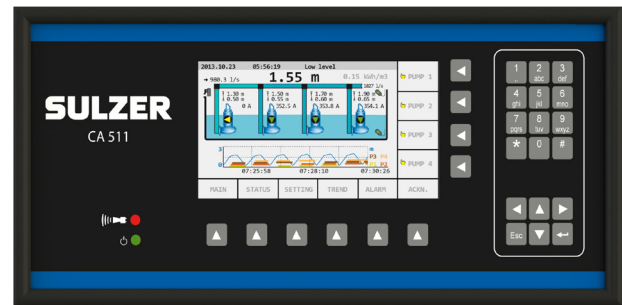
The user can access or view data and settings via several formats:

- Alpha numerical
- Animated graphical symbols
- Trend curves.

When mounted the operator interface has a high outer IP 65 classification and only needs 25 mm building depth behind the door.

Features

- IP 65 front panel protection
- Only builds 25 mm deep behind panel
- Large colour TFT screen
- Resolution, 480 x 272 Dots
- 10 quick navigations keys
- Combined numerical and alphanumeric keys
- CAN bus status led
- General alarm led
- Settable for metric and US units



Language support

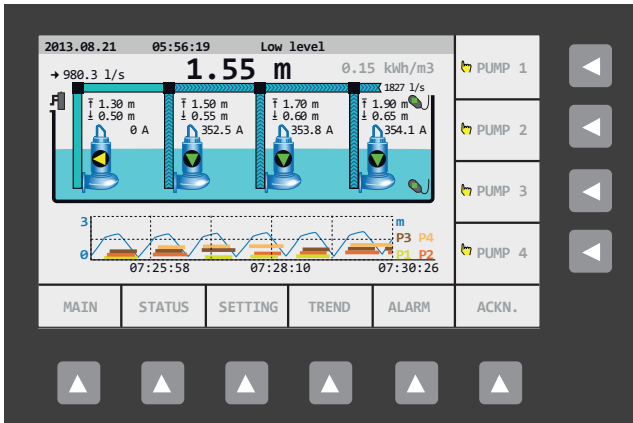
CA 511 together with PC 441 supports the following languages:

- Danish
- Dutch
- English
- French
- German
- Italian
- Norwegian
- Polish
- Portuguese
- Spanish
- Swedish
- Turkish

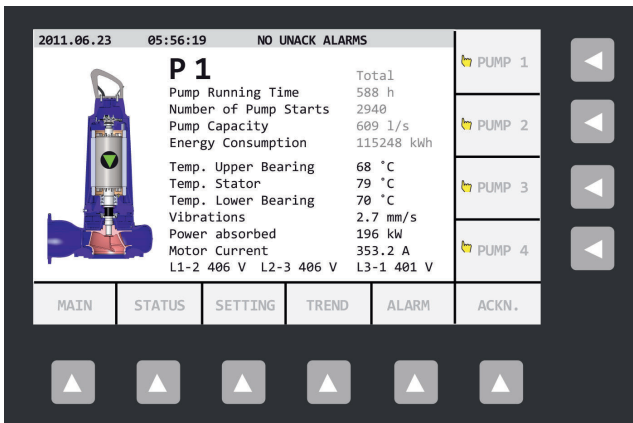
Technical specifications

Description	
Ambient operating temperature	-20 to +50 °C (-4 to +122 °F)
Ambient storage temperature	-30 to +80 °C (-22 to +176 °F)
Degree of protection	IP 65 Panel outside / IP 20 inside
Humidity	0-95 % RH non condensing
Power supply	9-34 VDC
Power current consumption	< 3.0 W
Dimensions H x W	
- outer	244 x 120 mm (9.61 x 4.72 inch)
- hole cut out	220 x 107 mm (8.66 x 4.21 inch)
- building depth	25 mm (0.98 inch)
Display	4,3 inch colour TFT
Resolution	480 x 272 Dots
Backlight	LED
Brightness, average	420 cd/m ²
Response time, typical	36 ms
Viewing angle	45-50 degrees
Keyboard	28 keys
Led indicators	2
Communication	Field bus of CAN type, max 250 meter cable length using same earth potential.

Main display view when connected to PC 441



Pump status view when connected to PC 441



Station trend when connected to PC 441

