

Submersible Wastewater Pump Type ABS AS 0530 - 0841

SULZER

Robust, reliable submersible pumps from 1 to 3.5 kW for pumping clear water, wastewater and sewage from buildings and sites in domestic and commercial areas.

Applications

AS submersible pumps have been designed for the economic and reliable pumping of wastewater and sewage, and can be used with automatic coupling system for fixed applications or as portable units.

- The 2" discharge version is especially suitable for pumping wastewater from underground garages.
- With vortex hydraulics the AS is particularly suitable for fluids containing fibrous or abrasive matter and for sewage.
- The Contrablock hydraulic system is suitable for larger proportions of solid or fibrous matter.
- Maximum allowable temperature of the medium is 40 °C, or short term to 60 °C (max. 5 minutes).

Construction

The water-pressure-tight, encapsulated fully flood-proof motor and the pump section form a compact, robust, unit construction.

Motor

Single-phase 230 V and three-phase 460 V, 60 Hz, 2-pole (3400 r/min) and 4-pole (1750 r/min). Insulation class F; protection type IP68. Ex protection to ATEX II 2G Ex h db IIB T4 Gb and FM international standards.

Consult Sulzer for Ex usage with frequency inverters.

Types of operation and frequency of starting: Pumps of the AS series have been designed for intermittent use only (S3, 25%) when dry-installed, and continuous use (S1) when submerged.

Bearings

The stainless steel motor shaft is supported in lubricated-for-life ball bearings.

Shaft sealing

Between motor and hydraulic section by means of a high quality sealing unit using a silicon carbide mechanical seal, independent of direction of rotation and resistant to temperature shock. Seal at motor side is by oil lubricated lip seal.

Discharge

AS 0530: G 2" internal thread (DN 50).

AS 0630 to 0641: radial slot DN 65 flange.

AS 0830, 0831, 0840 & 0841: radial slot DN 80 flange.

Temperature monitoring

Thermal sensors in the stator to switch off the pump in the case of overheating and switch on automatically after cooling down (option on standard AS). Temperature and leakage relays are required (see accessories table).

Seal monitoring

DI system consisting of a sensor in the motor and seal chambers which signals an inspection alert if there is leakage at the shaft seals (not in seal chamber on Ex version). Temperature and leakage relays are required (see accessories table).



Hydraulics

AS 0530, 0630, 0631, 0830, 0831: vortex, open, recessed four-vane impeller.

AS 0641, 0840, 0841: Contrablock, open single-vane impeller with spiral bottom plate.

Identification Code

e.g. AS 0840 S 12/2 Ex

Hydraulics:

AS Product range

08 Discharge outlet DN (cm)

40Hydraulic type

Motor:

S Modular motor version

12 Motor power P_2 kW x 10

2 Number of poles

Ex Explosive-proof

Features

- Hydraulic design with Contrablock system or vortex impellers.
- High reliability even under long term operating conditions.
- For wastewater and sewage containing solid or fibrous particles.
- In standard or Ex-versions.
- Option of automatic seal and temperature monitoring. Ex version has temperature monitoring as standard.
- Available for transportable or fixed installation.

Materials

Description	Material
Motor housing	Cast iron EN-GJL-250
Rotor shaft	Stainless steel 1.4021 (AISI 420)
Volute	Cast iron EN-GJL-250
Impeller	Cast iron EN-GJL-250
Bottom plate	Cast iron EN-GJL-250
Fasteners	Stainless steel 1.4401 (AISI 316)

Technical data

AS	Motor	Solids size (mm)	Discharge *	Rated voltage (V)	Motor power ** (kW)		Rated current (A)	Speed (r/min)	Weight *** (kg)
					P ₁	P ₂			
0530	S16/2W ^(†)	40	G 2"	230 1~	2.09	1.60	9.15	3400	34
	S16/2D	40	G 2"	460 3~	2.17	1.60	3.32	3400	34
	S18/2W ^(†)	40	G 2"	230 1~	2.46	1.80	10.80	3400	34
	S18/2D	40	G 2"	460 3~	2.42	1.80	3.61	3400	34
	S30/2D	40	G 2"	460 3~	3.87	3.00	5.50	3400	40
0630	S10/4W ^(†)	60	DN 65	230 1~	1.48	1.00	6.50	1750	37
	S10/4D	60	DN 65	460 3~	1.33	1.00	2.60	1750	37
	S16/4D	60	DN 65	460 3~	2.24	1.60	3.60	1750	37
	S25/4D	60	DN 65	460 3~	3.16	2.50	4.92	1750	42
0631	S16/2W ^(†)	40	DN 65	230 1~	2.09	1.60	9.15	3400	38
	S16/2D	40	DN 65	460 3~	2.17	1.60	3.32	3400	38
	S18/2W ^(†)	40	DN 65	230 1~	2.46	1.80	10.80	3400	38
	S18/2D	40	DN 65	460 3~	2.42	1.80	3.61	3400	38
	S35/2D	40	DN 65	460 3~	4.26	3.50	6.08	3400	46
0641	S35/2D	45	DN 65	460 3~	4.26	3.50	6.08	3400	42
0830	S10/4W ^(†)	60	DN 80	230 1~	1.48	1.00	6.50	1750	40
	S10/4D	60	DN 80	460 3~	1.33	1.00	2.60	1750	40
	S16/4D	60	DN 80	460 3~	2.24	1.60	3.60	1750	40
	S25/4D	60	DN 80	460 3~	3.16	2.30	4.92	1750	42
0831	S25/4D	80	DN 80	460 3~	3.16	2.50	4.92	1750	55
0840	S16/2W ^(†)	30	DN 80	230 1~	2.09	1.60	9.15	3400	35
	S16/2D	30	DN 80	460 3~	2.17	1.60	3.32	3400	35
	S18/2W ^(†)	30	DN 80	230 1~	2.46	1.80	10.80	3400	35
	S18/2D	30	DN 80	460 3~	2.42	1.80	3.61	3400	35
	S30/2D	30	DN 80	460 3~	3.87	3.00	5.50	3400	40
0841	S16/4D	80	DN 80	460 3~	2.24	1.60	3.60	1750	49
	S25/4D	80	DN 80	460 3~	3.16	2.50	4.92	1750	58

* G = internal thread, DN = flange

** P₁ = Power at mains; P₂ = Power at motor shaft.

*** Weight with 10 m cable. Cable size: Standard = 4G1.5, Ex = 7G1.5

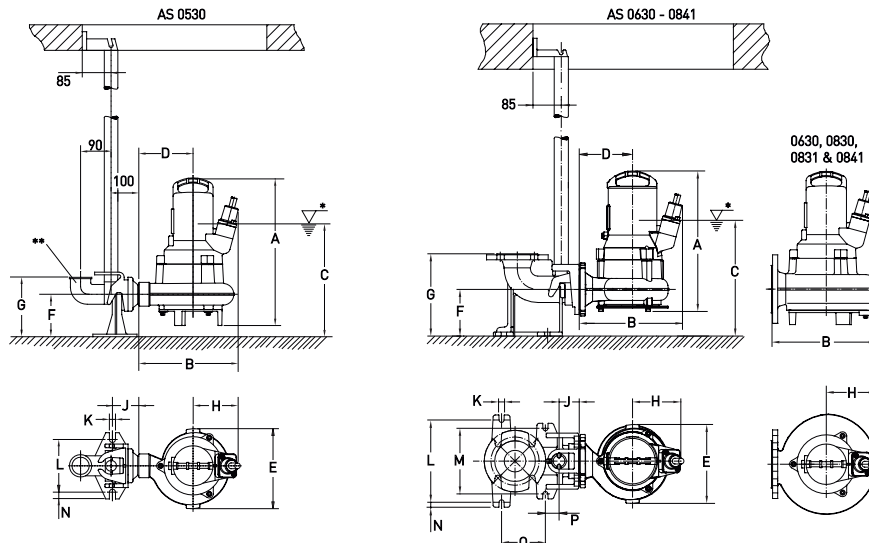
^(†) Start and Run capacitor to the following specification required in control panel.

Start: 125-160µF. Run: 40µF (2x20µF) for S10/4W, 30µF for S12/2W & S17/2W.

The recommended start time for the motors is two seconds.

Dimensions (mm)

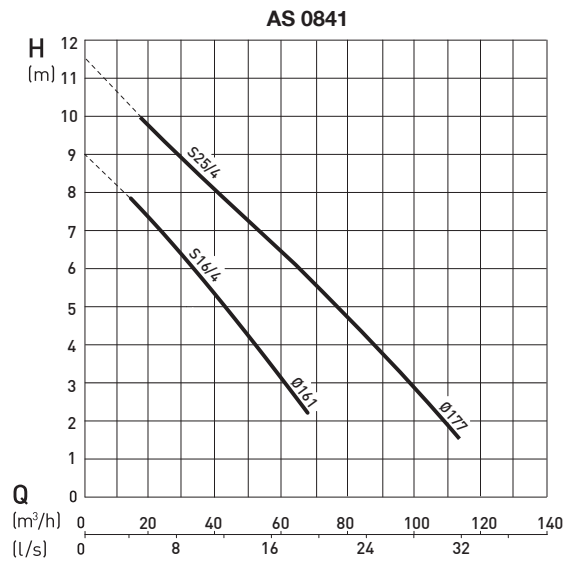
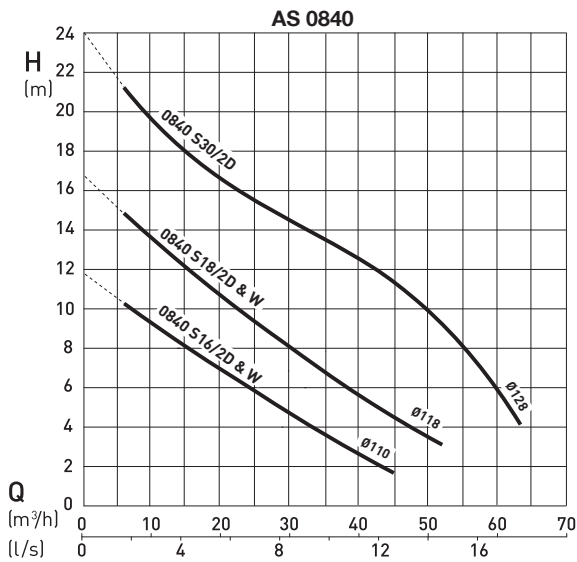
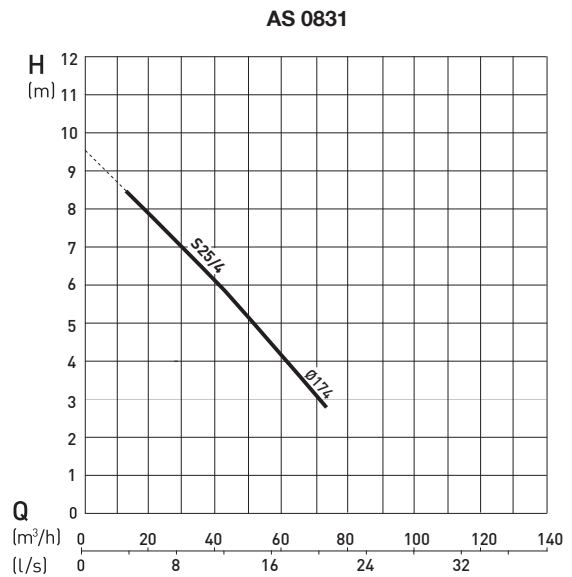
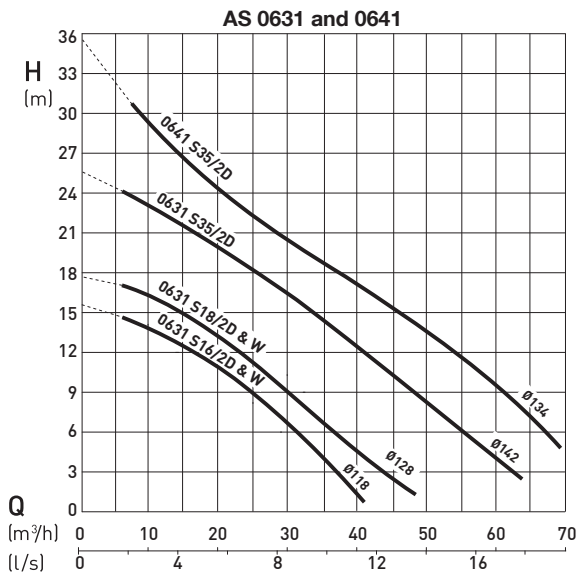
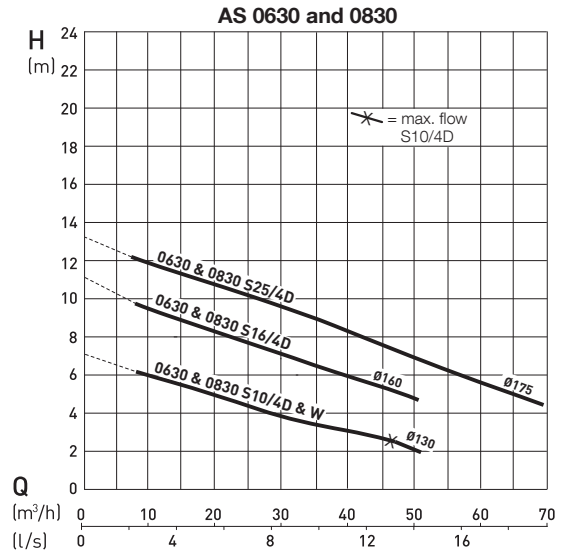
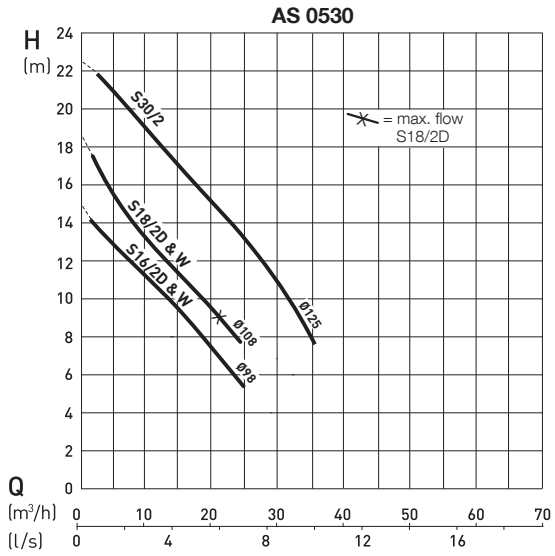
AS		A	B	C	D	E	F	G	H	J	K	L	M	N	O	P
0530	S16/2 & 18/2	432	293	331	160	236	125	175	133	100	18	155	n.a.	20	n.a.	n.a.
	S30/2	444	293	331	160	236	125	175	133	100	18	155	n.a.	20	n.a.	n.a.
0630	S10/4 & 16/4	437	309	348	157	294	140	247	147	57	18	245	195	15	132	40
	S25/4	450	309	348	157	294	140	247	147	57	18	245	195	15	132	40
0631	S16/2 & 18/2	409	305	346	160	237	140	247	145	54	18	245	195	15	132	40
	S35/2	421	305	346	160	237	140	247	145	54	18	245	195	15	132	40
0641	S35/2	428	308	346	160	237	140	247	148	54	18	245	195	15	132	40
0830	S10/4 & 16/4	437	307	408	160	294	200	342	147	88	18	275	195	20	182	25
	S25/4	450	307	408	160	294	200	342	147	88	18	275	195	20	182	25
0831	S25/4	470	397	445	240	312	200	340	157	88	18	275	195	20	182	25
0840	S16/2 & 18/2	418	280	379	130	210	200	342	148	88	18	275	195	20	182	25
	S30/2	430	280	379	130	210	200	342	148	88	18	275	195	20	182	25
0841	S16/4	473	397	445	240	312	200	340	157	88	18	275	195	20	182	25
	S25/4	485	397	450	240	312	200	340	157	88	18	275	195	20	182	25



* Lowest switch-off level; minimum switch-on level must be at least 100 mm higher.

** Elbow not supplied.

Performance Curves



H = Total Head; Q = Discharge Volume. Curves to ISO 9906. N.B. please use the ABSEL program to validate pump selection.

Accessories

	Description	Size	Part no.	AS	
Fixed installation with Sulzer Automatic Coupling System	Pedestal (cast iron EN-GJL-250) threaded (with fixing bolts and transition piece) flange (with fixing bolts) flange (with fixing bolts) flange (fixing bolts not included) flange (with plug/clamp connection and fixing bolts)	2" without bend	62320560	0530	
		DN 65: 90° cast bend	62320673	0630-0641	
		DN 80 without bend	62320557	0830/31/40/41	
		DN 80: 90° cast bend	62320649	0830/31/40/41	
		DN 80: 90° cast bend	62320650	0830/31/40/41	
	Fasteners (galvanized steel) bolts and gasket (bracket to pump) anchor bolts (pedestal to base)			62610632 62610775	0830/31/40/41 0830/31/40/41
		Guide Rail (galvanized steel)	1¼" x 1 m	31380007	0530-0641
	1¼" x 2 m		31380008		
	1¼" x 3 m		31380009		
	1¼" x 4 m		31380010		
1¼" x 5 m	31380011				
Chain Kit (stainless steel) Working load limit (WLL) 320 kg	1.6 m	310101395001	0530-0841		
	3.0 m	310101236003			
	4.0 m	310101236004			
	6.0 m	310101236006			
	7.0 m	310101236007			
Fixed installation - dry well, (horizontal)	Pump Support Kit (EN-GJL-250) head and volute supports with fixing bolts and vibration damper		61825001 62665103	0831 & 0841 0630, 0830 & 0840	
		Transportable installation	Skirtbase		61355013 61355012 61350526
Discharge Elbow (EN-GJL-250) flange to thread flange to STORZ coupling	DN 80 to G 2½"			31090131	0840
	DN 80 to G 2½"			62665074	
General	Adaptor (galvanized steel)	DN 65 to DN 80	21405002	0630, 0631 & 0641	
		Non-return Ball Valve (EN-GJL-250) internal thread internal thread with inspection hatch flange with inspection hatch and venting flange with inspection hatch	G 2"	61400527	0530
G 2½"	61400543		0630-0641		
DN 80	61400534		0830/31/40/41		
DN 80	61400523		0830/31/40/41		
Gate Valve (brass) (EN-GJL-250)	G 2"		14040007	0530	
	DN 80		61420500	0830, 0831, 0840 & 0841	
Leakage Relay Type ABS CA 461	110 - 230 VAC		16907010	0530 - 0841	
	18 - 36 VDC, SELV		16907011	0530 - 0841	
	Temperature and Leakage Relay Type ABS CA 462		110 - 230 VAC	16907006	0530 - 0841
			18 - 36 VDC, SELV	16907007	0530 - 0841

Design

1. Ball bearings; lubricated-for-life.
2. Watertight cable entry.
3. Motor with thermal sensor in air-filled motor housing.
4. Seal chamber with seal monitoring.
5. Sic/Sic mechanical seal.
6. Contrablock (featured) or vortex hydraulics.

