

Rotterdam Service Center

Your Service Partner for Innovative Solutions





Rotterdam Service Center

Performance-critical equipment needs reliable and innovative repair and maintenance solutions. Sulzer is the leading service provider for rotating equipment. Founded in 1834, Sulzer is a global company with over 150 locations. The Rotterdam Service Center, located in the port of Rotterdam, the Netherlands, is specialized in high-quality, cost-effective, customized solutions for maintenance and repairs of all makes and models of turbomachinery. We help you keep your equipment operating at peak efficiency. Every solution is unique and tailored to the equipment needs of each application.



Capabilities

- Steam turbines and rotor services
- Compressor and expander repairs and overhauls
- Complete OEM services and spare parts for pumps
- Engineering and reverse engineering services
- Specialized coatings
- Machining and welding services
- 24/7 emergency response
- Turnkey field services

Facility

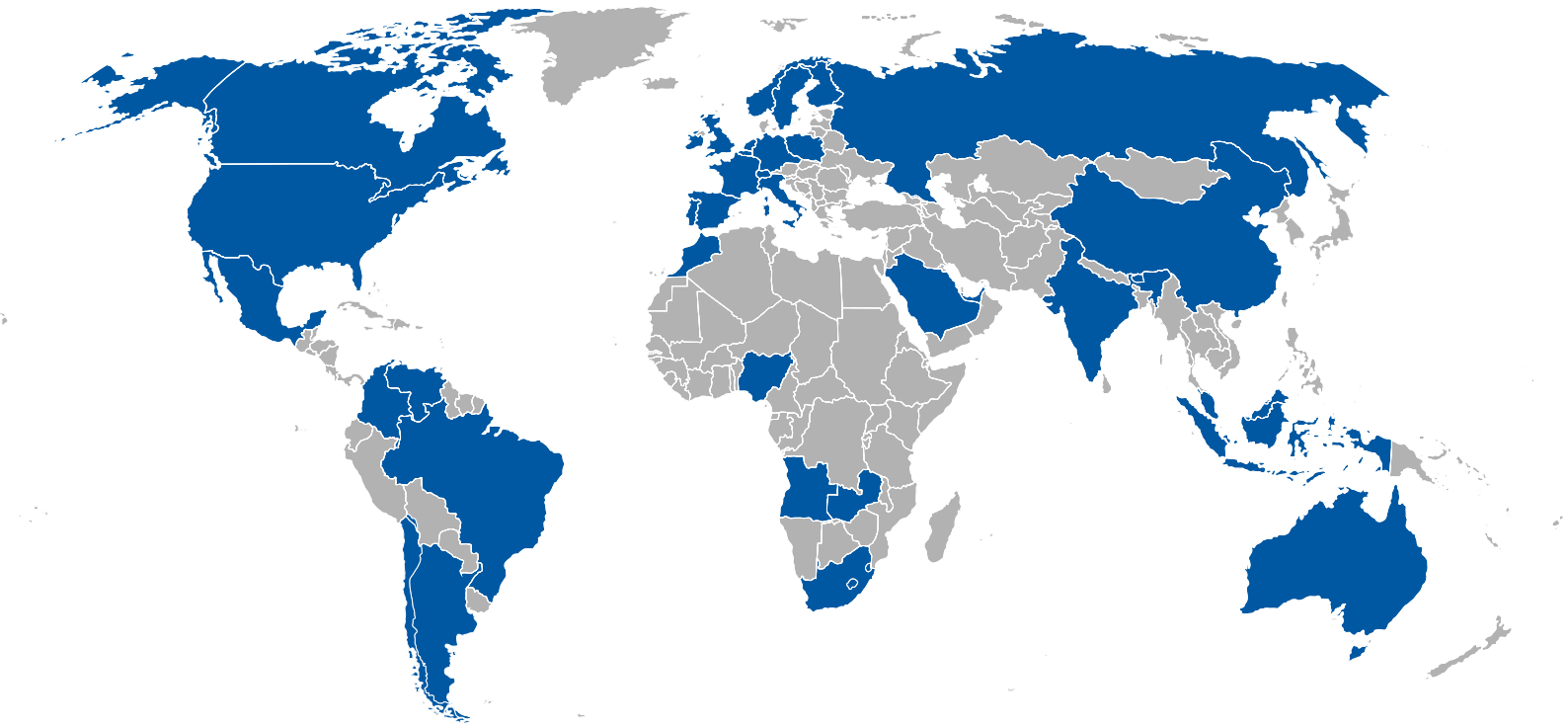
- 500 m² office space
- 2,750 m², workshop space
- 350 m², climate controlled rotor storage
- Overhead crane capacity: 2 x 25 tons
- ISO certification 9001:2008, 14001:2004, VCA/SCC** 2008/5.1 and ATEX IECEx

Your Partner

- Optimize your operational efficiency with customized solutions
- Capitalize on a collaborative advantage that delivers high-quality, cost-effective, customized and turnkey solutions to improve equipment reliability

Close to Our Customers

Implementing a cost effective and efficient maintenance regime requires an experienced and reliable partner that has the proven expertise and facilities worldwide. Sulzer can service all brands of rotating equipment such as turbines, compressors, expanders, generators, motors and pumps. With over 100 service centers around the world, Sulzer is close to our customers with easily accessible locations.



Reliable Service Solutions for Leading Industries

Supporting customers 24/7, Sulzer is the leading worldwide, independent service provider for the repair and maintenance of critical rotating equipment. Our footprint spans the globe and provides outstanding and dedicated service solutions for leading industries.

Power Generation



Oil and Gas Refining



Petrochemical Processing



Fertilizer



Air Separation



General Industry





In-house Capabilities That are Second to None for Your Steam Turbine, Compressor and Pump

With world-class engineering know-how and experts to oversee all aspects of steam turbine, compressor and pump repairs, refurbishments, and many other specialized services, you benefit from the highest quality possible.

Services for steam turbines

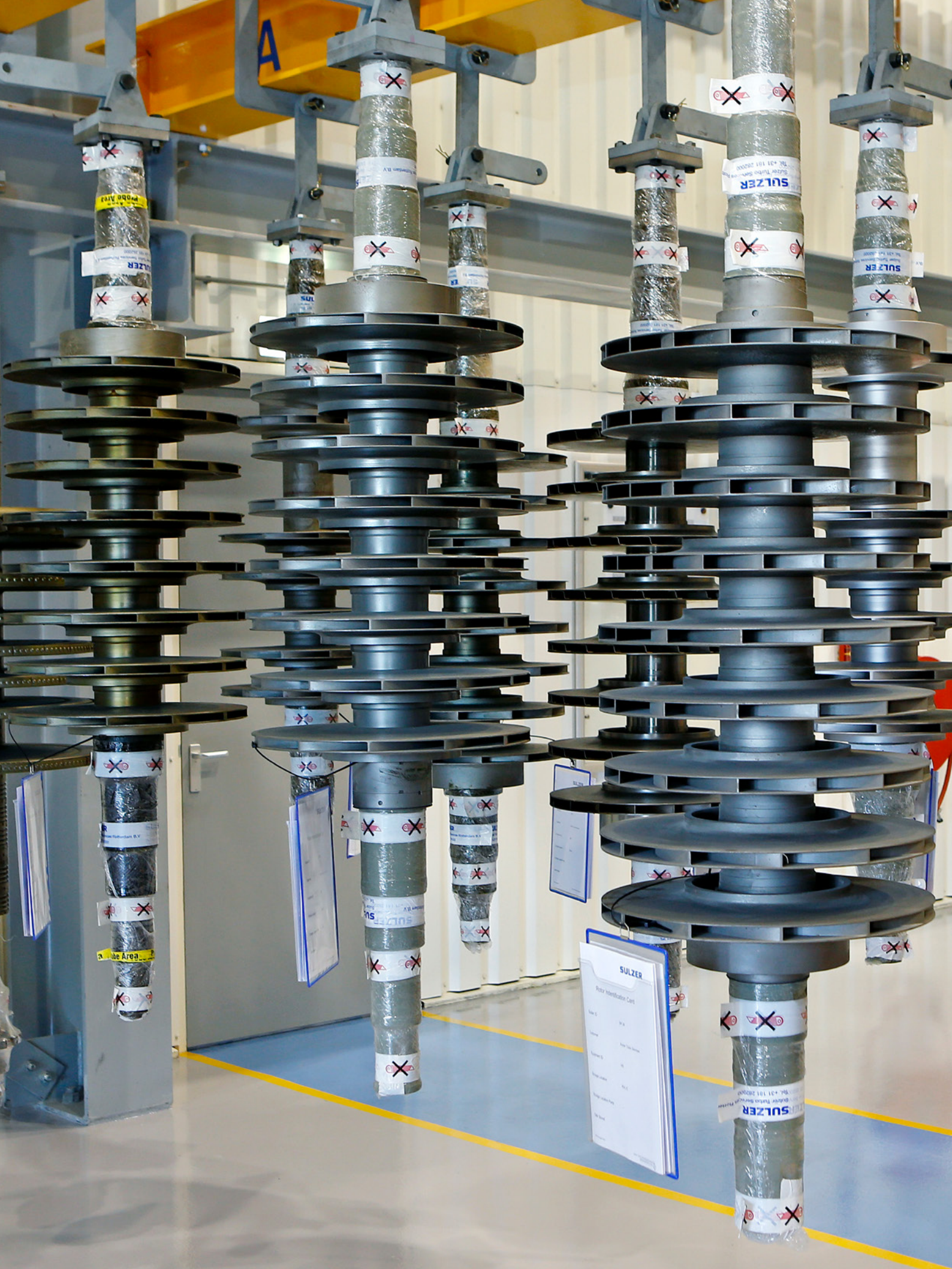
- Turnkey turbine repairs, inspections, analysis, overhaul
- 24/7 emergency response
- Refurbishments, re-blading, disk reconstruction and partial and complete rotor restoration and manufacturing
- Reverse engineering of critical parts
- Parts replacement including blade manufacturing
- Low and high-speed balancing
- Technical services support
- Transactional and long-term service agreements



Services for axial and centrifugal compressors

- Turnkey rotor repairs, inspections, analysis, overhaul
- 24/7 emergency response
- Performance upgrades and re-application
- Parts replacement including blade and impeller manufacturing
- Protective coatings
- Low and high-speed rotor balancing
- Bearing and seal replacement and upgrade
- Technical services support





SULZER

Order Identification Card

Order No.	914
Customer	SW
Order Date	10.10.2000
Order Status	OK
Order Reference	101
Order Date	10.10.2000

Pump services

- Inspection, analysis and overhaul
- Rapid repair
- OEM spare parts replacement
- Innovative technology
- Technical optimization
- 24/7 response and field service
- Service agreements
- Retrofits and upgrades



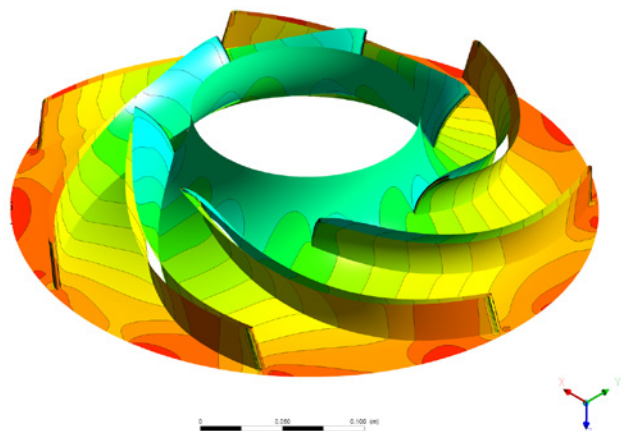
Services for gearboxes, fan, blowers and general

- Maintenance, repair and overhaul of equipment in the petroleum refining, power generation and paper industry
- Inspection, analysis and overhaul
- Refurbishing of parts
- Manufacturing of reverse engineered parts
- Re-engineering



Engineering services and technical support

- Root Cause Failure Analysis (RCFA)
- Metallurgic analysis
- Re-rates
- Rotor dynamics
- Finite Element Analysis (FEA)
- Machinery diagnostics
- Relocations
- Controls upgrades



MACHINE TOOL

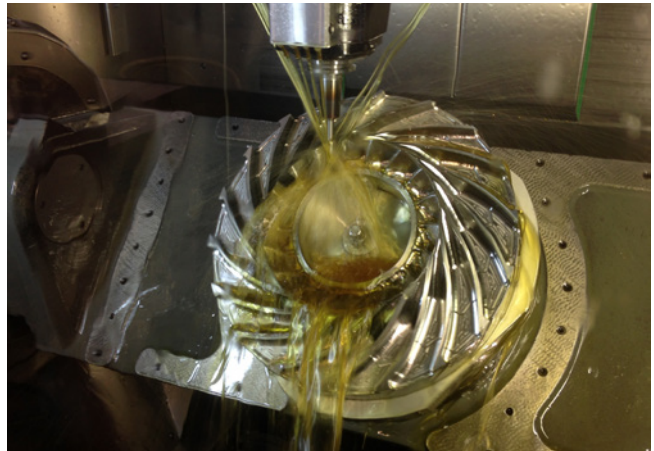


Specialized Turbomachinery Shop Services Improve Availability

With 24/7 emergency response, Sulzer is dedicated to improving your equipment's availability through specialized turbomachinery and turnkey field services that provide specialized machining and welding services, 24/7 emergency response and technical services support.

Specialized turbomachinery shop services

- Specialized machining, welding and coating
- Turning, boring, milling, grinding and CNC centers
- 5-axes milling
- Rotor and diaphragm restoration
- 24/7 emergency response
- In-situ machining



Turnkey field services

- Testing, component repairs, inspections, analysis and overhauls
- 24/7 emergency response
- Highly-skilled engineers
- Experienced field services teams
- Fully equipped mobile field tool and hoisting units
- On-site installation, commissioning and machining
- Laser and optical alignment
- Vibration analysis
- Technical services support



Sulzer Turbo Services Rotterdam B.V.

Rotterdam Service Center

Moezelweg 190

3198LS Europoort, Rt

The Netherlands

Phone +31 181 282 000

www.sulzer.com



E10463 en 3.2017, Copyright © Sulzer Ltd 2017

This brochure is a general product presentation. It does not provide a warranty or guarantee of any kind. Please, contact us for a description of the warranties and guarantees offered with our products and services. Directions for use and safety will be given separately. All information herein is subject to change without notice.