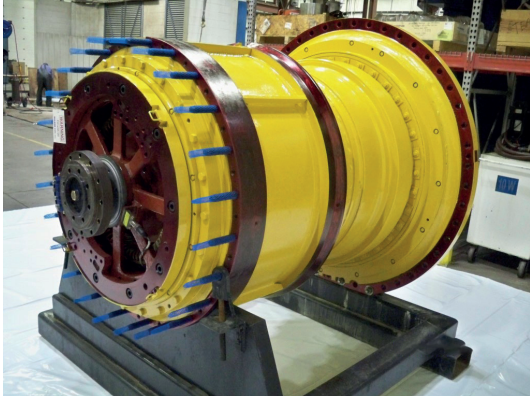
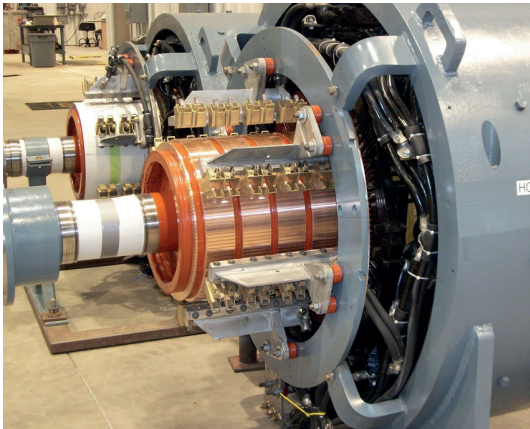


Gillette service center



Sulzer is a global partner delivering reliable and sustainable solutions for your key applications. We offer repair and maintenance services from a single access point for turbines, compressors, pumps, generators and motors. By operating one of the largest service networks in the industry, we are close to our customers with more than 100 production and service locations worldwide.

Resources and facilities

Sulzer's comprehensive electromechanical service center in Gillette, Wyoming is fully equipped to maintain, repair and sell a wide range of large motors and generators for customers in mining, power generation, petrochemical, steel and heavy-manufacturing industries. Over 81,000 sq ft of shop space houses complete electrical, machining and welding capabilities, underneath 40 tons of overhead crane capacity. Projects are completed by a highly experienced staff of engineers, project managers, sales managers, and technicians combined with a crew of dedicated craftsmen.

Benefit from our comprehensive service offering

- Machine shop services (manufacture and repair)
- Welding services (buildup and fabrication)
- Motor inspections and overhauls
- Equipment removal and installation
- Balancing
- Vibration analysis
- Laser aligning
- New motor sales

The service portfolio for your electrical equipment

- AC motor up to 15,000 HP and generator repair and rewinding
- DC motor up to 10,000 HP and generator up to 5 MW repair and rewinding
- AC test panel to 7,200V and 1,000 KVA
- DC test panel to 750 V-100 A
- Traction and wheel motors
- 20,000 lb. balancing capability

The service portfolio for your mechanical equipment

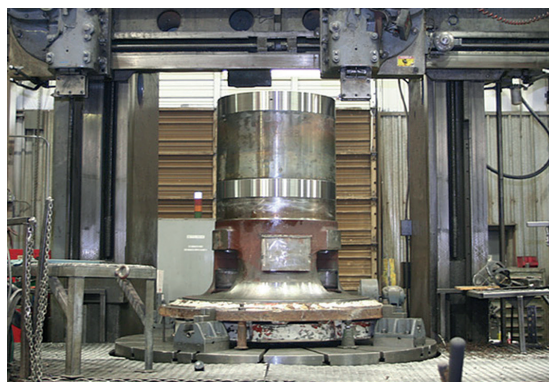
- Gearboxes (preferred partner for Falk, Rexnord)
- Steam turbines and compressors
- Pumps
- Blowers and fans

Service center equipment

- Lathes from 18" to 48" swings
- Horizontal boring mills machines to machine from 84" to 120"
- Vertical boring mills from 104" width swing to 84" height under rail
- Faro arm
- 4 Axis CNC lathe 34" swing 17" x and 80" y axis travel
- PdMa testing
- CNC vertical mill from 40" to 60" by 30" height
- Mills, drill presses, grinders and key seaters
- Infrared camera
- CNC torch with 5' by 10' table capable of cutting 8' thick plate
- Specialty welding and fabrication

Field services

- Motor and generator on-site evaluation
- Optical laser alignment
- CSI 2140 vibration data collection and analysis
- AC/DC troubleshooting
- Equipment removal and installation
- Portable line boring bars 1 3/4", 2", and 3" diameters



About Sulzer

Through a network of over 100 service sites around the world, Sulzer provides cutting-edge parts as well as maintenance and repair solutions for pumps, turbines, compressors, motors and generators. We service our own original equipment, but also all associated third-party rotating equipment run by our customers, maximizing its sustainability and life cycle cost-effectiveness. Our technology-based solutions, fast execution and expertise in complex maintenance projects are available at our customers' doorsteps.



Sulzer Electro & Mechanical Services (US) Inc.

Gillette Service Center
3382 Bird Drive
Gillette, Wyoming 82718
Phone +1 307 682 8733

E10373 en 1.2024, Copyright © Sulzer Ltd 2024

This brochure is a general product presentation. It does not provide a warranty or guarantee of any kind. Please contact us for a description of the warranties and guarantees offered with our products. Directions for use and safety will be given separately. All information herein is subject to change without notice.