



- Fault diagnosis
- Engineering expertise
- Reliable, first-class solutions
- Round the clock service

Engineering Services for Facility Management

Modern buildings have numerous motors, drives, generators, fans and pumps with associated controls which require regular maintenance and repairs. This often involves fault diagnosis followed by rectification which could require a repair on site or equipment removal and repair in a local workshop.

Sulzer provides repairs for electric motors and associated mechanical equipment. Maintenance requirements are often complex and require professional engineering solutions provided by skilled Sulzer engineers. Most of our local engineering facilities are available 24 hours, 7 days a week to ensure the fastest response and repair solutions. Heavier equipment removal from areas with difficult access is our specialty, ensuring maximum safe care and attention.

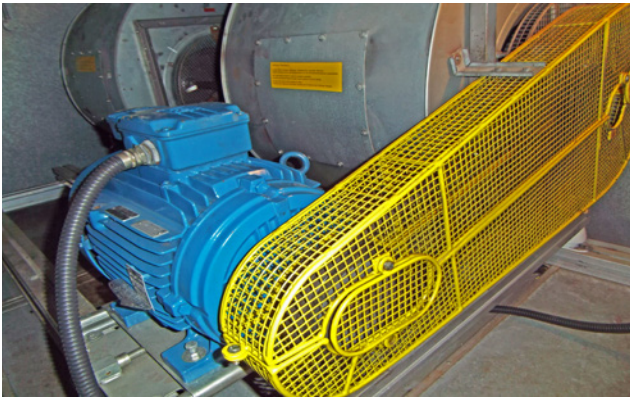
We offer services for:

- air handling units - motors, couplings, belts, and fans
- motor pumping sets - all manufacturers
- generator maintenance
- thermographic surveys
- repair and energy efficiency improvements for drives and controls
- mechanical repairs, including workshop machining, on-site fitting, balancing, vibration analysis, and alignment
- electric motor rewind
- pump repair and maintenance
- VSD drive repair and maintenance
- ISO accreditations: 9001, 14001 and 18001

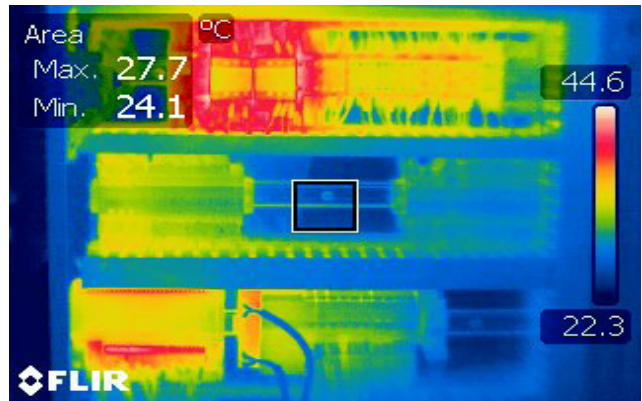
We work with our customers to ensure a first-class solution. Many situations require accurate planning to ensure minimum disruption to the building users. Our flexible approach means we, if necessary, work over night or at the weekend. We offer cost-effective solutions to maximise your budget and strive for performance improvements whenever possible. Rely on us to provide you with reliable and dependable solutions.



Air handling units



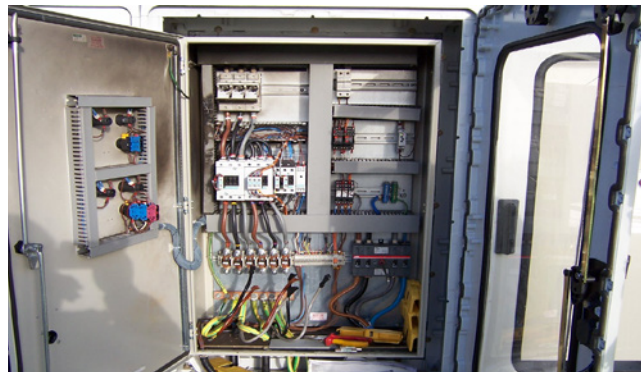
Thermographic surveys



Motor pumping units - all manufacturers



Drives and controls



Generator maintenance and repairs



Fan unit repair and overhauls



Ashford Service Centre
Unit 5/6, Wyvern Way
Henwood Industrial Estate
Ashford, Kent TN24 8DW, UK
Tel. +44 (0)1233 635 651
service.ashford@sulzer.com