

Maximizing asset availability and reducing downtime with Total Pipeline Services™

Safety, budgeting accuracy and profit-per-barrel determine a pipeline operator's success, and all are contingent on the reliability, performance and integrity of the physical assets.

To determine equipment condition and ensure the operation's continued success, many operators rely on technology and asset lifecycle tracking. Through the integration of established business platforms and improvements in machine learning, Sulzer has the technology to offer competitive advantage with limited capital engagement.

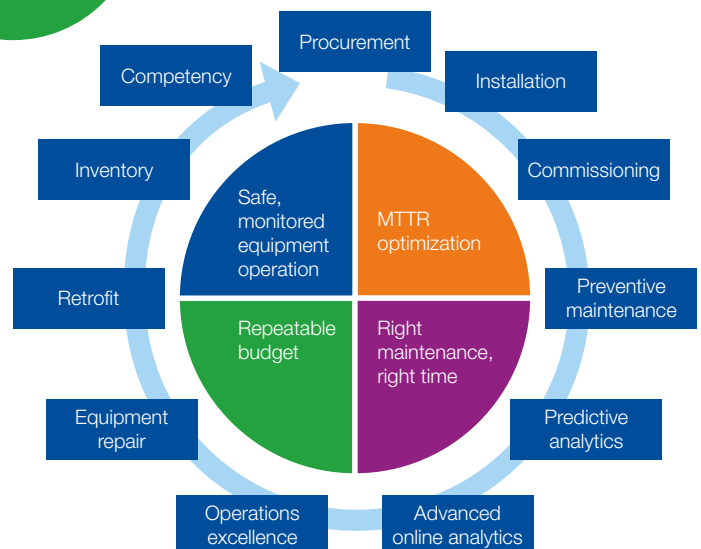
As your operating services partner, Sulzer offers Total Pipeline Services as a safe and remote means in delivering on your customer commitments.

- Stabilized OpEx budget
- Online equipment health monitoring
- Dedicated equipment specialist
- Prompt on-site expert service
- Fast, reliability-based pump overhaul
- Purposefully chosen, located, and maintained inventory
- Workforce competency gap closure

This is not something new to pay for, but a program to connect proven processes, experienced human resources, and machinery health information to maximize profits while protecting your financial expectations.



Stabilize and reduce OpEx spend



Sulzer Total Pipeline Services™ is an alignment of best practices to get the measurable improvement from the actions you perform today

This co-created approach brings project accountability to the next level and truly align goals and incentives to provide measurable improvement in equipment availability, efficiency, reliability and repair.

- By partnering with Sulzer, you benefit from
- Evergreen warranty – Always protected
- Performance pricing – Incentivized by your success
- Onsite commitment – Arrive on-time, at the right time
- Overhaul commitment – Refurbish in as little as 3 days
- Commit to the future – Improve operator and service acumen

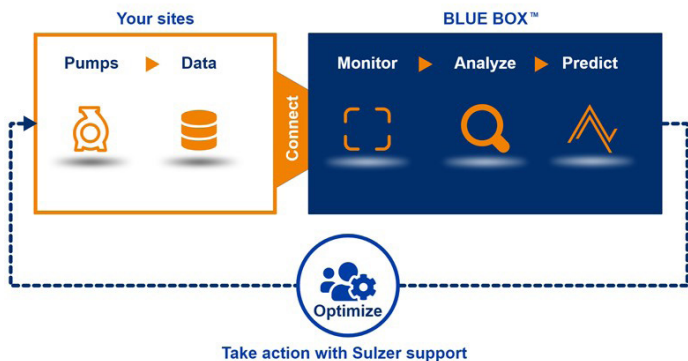
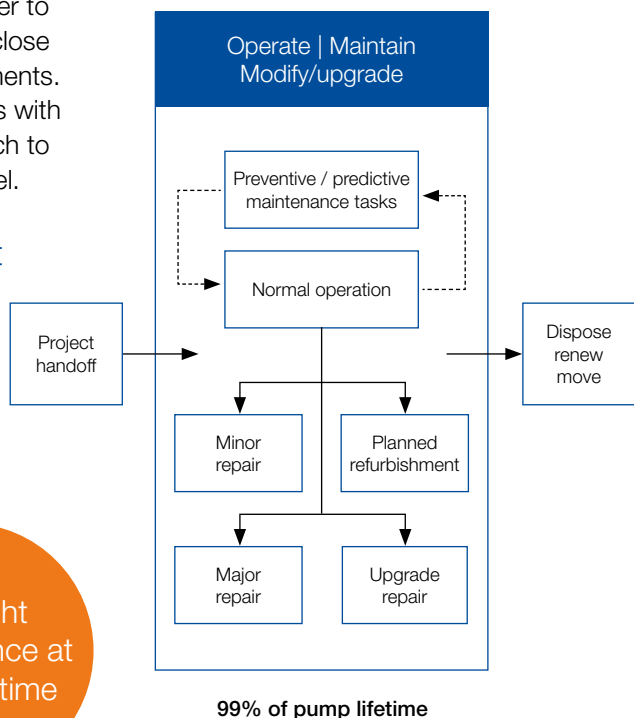


The initial step connects operation management with Sulzer to define success, establish communication pathways, and close any logistics gaps for repeatable success on our commitments. During onboarding, Sulzer's equipment specialist connects with your current analytics and predictive maintenance approach to monitor equipment health and engage at a meaningful level.

Total Pipeline Services is all about equipment up-time

The program includes our award-winning BLUE BOX™ that combines IoT and advanced analytics to help you become more competitive in connecting the digital ecosystem to effective and actionable responses.

Total Pipeline Services is managed by an experienced equipment specialist that provides support in verifying anomalies, remediating options, evaluating inventory and closing knowledge gaps. Sulzer's expert engineering and services are then aligned to your operating and maintenance goals.



To learn more about Sulzer Total Pipeline Services please contact: totalpipelineservices@sulzer.com