

SULZER**SPARE PARTS LIST/ERSATZTEILLISTE/LISTE DE PIÈCES DE RECHANGE****PIRANHA S30/2 60Hz D Std. & FM**

Valid from Serial Number: 100 -

Page :
 Issue of : 20/10/11
 Supersedes Issue :
 Issue No. : 01,02,03,04
 Drawing ref. Nr. : ANS12043-03

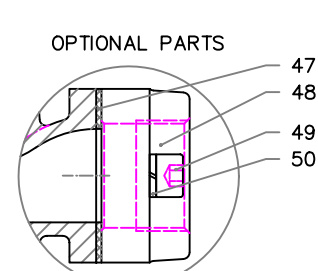
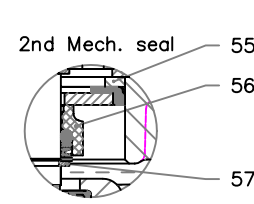
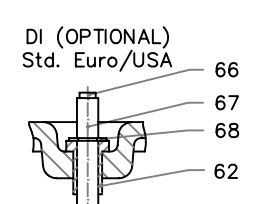
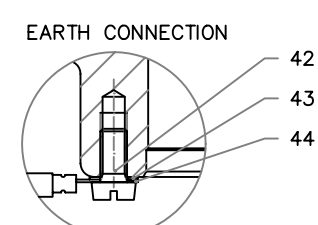
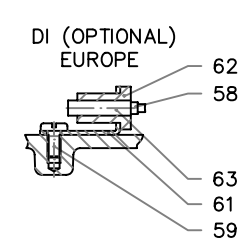
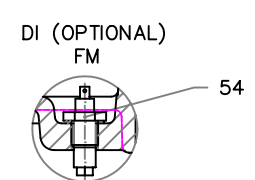
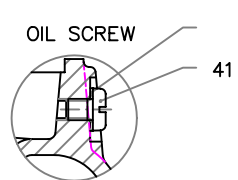
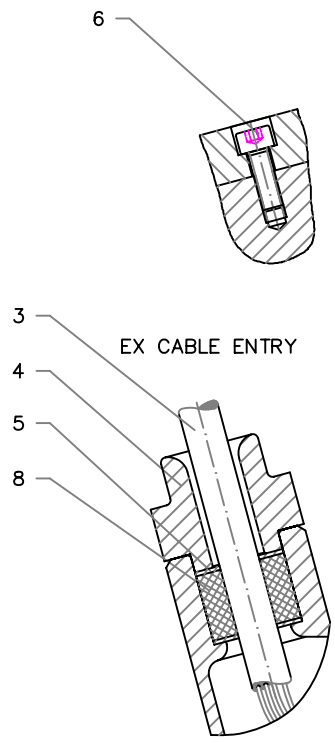
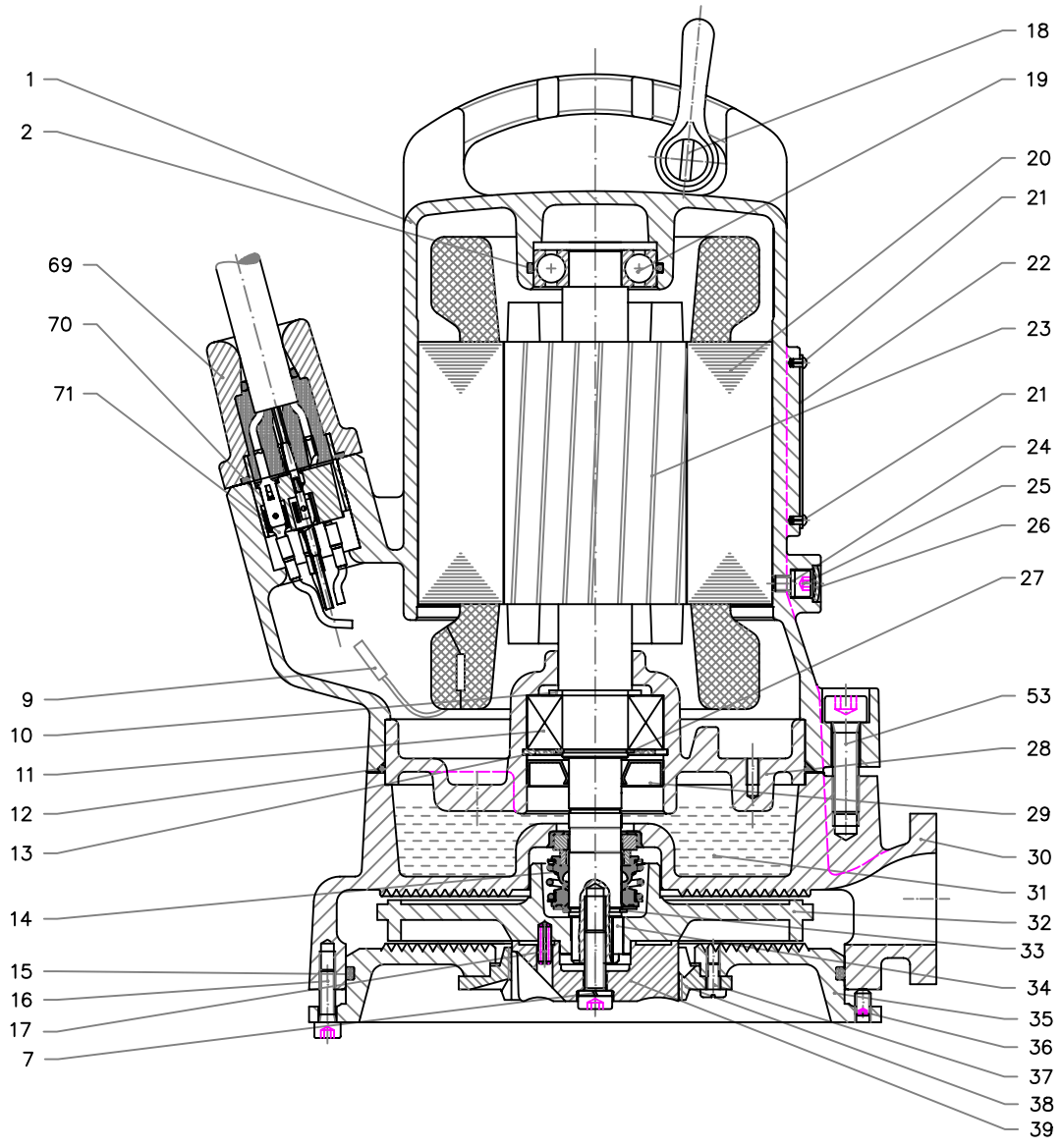
Pos. No.	Part No.	Kit	Qty	Description	Benennung	Designation	Dimensions /Din	Comments	Price
1	31005034		1	Motorhousing	Motorgehäuse	Carcasse moteur			
2	11120468	AB	1	O-ring	O-ring	Joint torique	47x3 DIN3770	Viton	
3	43025203			Cable	Kabel	Cable	14/7 SOW-A	10m (D)	
3	43025212			Cable	Kabel	Cable	14/7 SOW-A	20m (D)	
3	43025220			Cable	Kabel	Cable	14/7 SOW-A	30m (D)	
4	31320140		1	Cable cap	Kabeleinführung	Entree de cable	GG25 (Ø20)		
5	42015005		2	Washer	Scheibe	Rondelle	34x19.5x1.5		
6	11210238		4 (2)	Cylinder screw	Zyl.Blechschaube	Vis à tête plate	M8x30 DIN912	1.4401 (2) Easyfit	
7	11530017		1	Spring washer	Federring	Rondelle	M8 DIN7980		
8	43075029	A	1	Cable seal	Kabeldichtung	Joint de kabel	Ø34x18x29.5H		
8	43075035	B	1	Cable seal	Kabeldichtung	Joint de kabel	Ø34x18x29.5H (viton)		
9	12180044		4	Butt connection	St. verbinder	Connecteur	Ø1.0-2.5mm		
10	11060006	AB	1	Support washer	Tragscheibe	Rondelle	Ø25x35x2 DIN988		
11	11020006		1	Ball bearing	Kugellager	Roulement à billes	5205 B. DIN628		
12	11120817	A	1	O-ring	O-ring	Joint torique	Ø160x3 DIN3771		
12	11120870	B	1	O-ring	O-ring	Joint torique	Ø160x3 DIN3771	Viton	
13	11080010	AB	1	Circlip	Sicherungsring	Circlips	Ø52x2 DIN472		
14	11110001		1	Mechanical seal	Gleitringdichtung	Garniture mecanique	Ø20mm		
14	11110149		1	Mechanical seal	Gleitringdichtung	Garniture mecanique	Ø20mm (Viton)	Viton	
15	11120056	A	1	O-ring	O-ring	Joint torique	Ø180x4 DIN3771		
15	11120871	B	1	O-ring	O-ring	Joint torique	Ø180x4 DIN3771	Viton	
16	11210240		3	Cylinder screw	Zylinderschraube	Vis à tête cylindrique	M6x20 DIN912	1.4401	
17	11730013		1	Dowel pin	Spannstifte	Goujon	Ø5x20 DIN1481		
18	14990008		1	Shackle	Schäkel	Manille	DIN82101		
19	11010017		1	Ball bearing	Kugellager	Roulement à billes	6204 ZR.C3 DIN625		
20	65005360		1	Stator	Wicklung	Stator	208/3/60		
20	65005361		1	Stator	Wicklung	Stator	230/3/60		
20	65005362		1	Stator	Wicklung	Stator	380/3/60		
20	65005349		1	Stator	Wicklung	Stator	460/3/60		
20	65005791		1	Stator	Wicklung	Stator	460/3/60	Without klixon	
20	65005455		1	Stator	Wicklung	Stator	575/3/60		
23	65015077		1	Rotor shaft	Rotor mit Welle	Rotor avec arbre	1.4021		
23	65015081		1	Rotor shaft	Rotor mit Welle	Rotor avec arbre	1.4401		
24	11130003	AB	1	Seal ring	Dichtung	Rondelle joint	Ø6x10 DIN7603		
25	11210253		1	Cylinder screw	Zylinderschraube	Vis à tête cylindrique	M6x10 DIN912		
26	11490020	AB	1	Seal washer	Verschlusscheibe	Rondelle joint	DIN470		
27	11070007	AB	1	Circlip	Sicherungsring	Circlip	Ø25x1.2 DIN471		
28	31155036		1	Bearing lid	Lager deckel	Couvercle palier	GG25	Std. Euro DI-probe Std. US DI-probe	
28	31155026		1	Bearing lid	Lager deckel	Couvercle palier	GG25	FM DI-probe	
29	11090009	AB	1	Lip seal	Wellendichtung	Joint à levres	Ø20x52x10 DIN3760		
30	31055020		1	Volute	Kreiselmkammer	Corps de pompe			
31	11030046		0.53 L	Oil	Öl	Huile			

SPARE PARTS LIST/ERSATZTEILLISTE/LISTE DE PIÈCES DE RECHANGE
PIRANHA S30/2 60Hz D Std. & FM

Valid from Serial Number: 100 -

Page :
 Issue of : 20/10/11
 Supersedes Issue :
 Issue No. : 01,02,03,04
 Drawing ref. Nr. : ANS12043-03

Pos. No.	Part No.	Kit	Qty	Description	Benennung	Designation	Dimensions /Din	Comments	Price
32	35075128		1	Impeller	Laufrad	Roue	Ø150		
33	11070006		1	Circlip	Sicherungsring	Circlip	Ø20x1.2 DIN471		
34	11630131		1	Impeller key	Paßfeder	Clavette	6x6x16		
35	31065015		1	Bottom plate	Bodenplatte	Plaque de base			
35	31065020		1	Bottom plate	Bodenplatte	Plaque de base		FHA	
36	11360040		3	Grub screw	Gewindestif	Goujon	M6x10 DIN916		
37	11260091		4	Lens Head Screw	Flachkopfschraube	Vis à tête plate	M5x12 DIN85		
38	42930004		1	Shredding ring	Zerkleinerungs ring	Bague de coupage			
39	42935006		1	Shredding rotor	Zerkleinerungs rotor	Rotor dilacérateur			
40	11650001	AB	1	Locking Washer	Klemmscheibe	Rondelle-frein	M8 PVC/NITR		
41	11260100		1	Lens Head Screw	Flachkopfschraube	Vis à tête plate	M8x10 DIN85		
42	11260104		1	Hexagonal screw	Sechskantschraube	Vis hexagonal	M5x10 DIN85 GV		
43	11500003		1	Locking washer	Sicherungsscheibe	Tole-frein	A5.1 DIN6797		
44	12180014		1	Cable shoe	Flachsteckhülse	Cosse-câble	Ø1.5-2.5mm		
47	43070159		1	Gasket	Flachdichtung	Joint plat			
48	31090140		1	Discharge connection	Scheibenkupplung	Accouplement rigide			
49	11210245		2	Cylinder screw	Zylinderschraube	Vis à tête cylindrique	M10x30 DIN912		
50	11530018		2	Spring washer	Federring	Rondelle	Ø10 DIN7980		
51	11210243		1	Cylinder screw	Zylinderschraube	Vis à tête cylindrique	M8x25 DIN912	1.4401	
52	11530018		3	Spring washer	Federring	Rondelle	Ø10 DIN7980		
53	11210239		3	Cylinder screw	Zylinderschraube	Vis à tête cylindrique	M10x35 DIN912		
54	12120241		1	DI-probe	DI-electrode	Sonde DI	M12	FM	
55	11060014		1	Support washer	Tragscheibe	Rondelle	Ø42x52x2.5 DIN988		
56	11100066		1	Mechanical seal	Gleitringdichtung	Garniture mecanique	Ø20mm	CARBON-CHROME	
57	11070006	AB	1	Circlip	Sicherungsring	Circlip	Ø20x1.2 DIN471		
58				Not available	nicht lieferbar	pas disponible			
59				Not available	nicht lieferbar	pas disponible			
61				Not available	nicht lieferbar	pas disponible			
62	43070326		1	Seal for DI	Dichtung für DI	Joint pour DI			
63				Not available	nicht lieferbar	pas disponible			
66	12180144		1	Round plug	Rundstecker	Fiche ronde	Ø4mm		
67	42135000		1	DI-probe	DI-electrode	Sonde DI			
68	11080027		1	Circlip	Sicherungsscheibe	Circlip	Ø7x0.9mm DIN6799		
69	43025375		1	Cable EasyFit	Kabel EasyFit	Cable EasyFit	14/7 SOW-A	10m (D)	
69	43025377		1	Cable EasyFit	Kabel EasyFit	Cable EasyFit	14/7 SOW-A	20m (D)	
69	43025378		1	Cable EasyFit	Kabel EasyFit	Cable EasyFit	14/7 SOW-A	30m (D)	
70	11120829		1	O-ring	O-ring	Joint torique	Ø32x3 DIN3771	Viton	
71	12180002		4(7)	Cable shoe	Flachsteckhülse	Cosse-câble		(7) for 7 core cable	
	61195075	A	1	Seal kit	Dichtungssatz	Jeu de joint complet			
	61195079	B	1	Seal kit	Dichtungssatz	Jeu de joint complet	Viton		



SULZER	SPARE PARTS LIST / ERSATZTEILLISTE		AN-S 12.43 -03	
	LIST DE PIÉCES DE RECHANGE		CAD CODE: G:\DWORKING\12043	
	PIRANHA S26/2D S13/2W 50Hz		03.10.97 C. QUIRKE	
	PIRANHA S30 60Hz		Technical changes reserved carregos reservados Sans réserve de modification Product Center: IEM	