

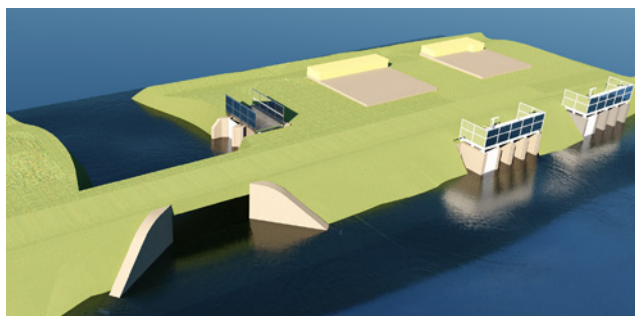
Sulzer secures contract for Danish climate protection scheme

Nine Sulzer pumps are set to play a key role in new flood defenses around the town of Ringkøbing. Danish water utility Ringkøbing-Skjern Forsyning A/S has selected Sulzer as the primary pump supplier for a major flood defense project. Two new pumping stations are being constructed to mitigate the impact of rising water levels in the Ringkøbing Fjord over the next 40 years and beyond.

Much of the land around the town of Ringkøbing in west Denmark was originally reclaimed from the sea. It is protected from inundation by a system of dykes and a sea lock that have operated successfully for decades. With the normal water level in Ringkøbing Fjord expected to rise by 60 cm by 2060, however, the regional water utility has embarked on a large-scale upgrade of its drainage and flood protection systems.

After a detailed technical evaluation by Ringkøbing-Skjern Forsyning and its Tier 1 design and construction partner, Sulzer has been selected as the preferred supplier for two new pumping stations that will be built as part of the project. The facilities will lift rain, drainage and cloudburst water over the dykes whenever the water level in the fjord means the lock is closed.

Sulzer will supply one XFP base load pump and three VUPX peak load pumps for the Ringkøbing pumping station, together with one XFP base load pump and four VUPX peak load pumps for the adjacent Skælbækker station. The pumping capacity of the two stations will be 1'582 l/s and 2'254 l/s respectively, with one peak load pump held in reserve at each facility.



The new facilities will meet forecast demand until 2060

Sulzer pump specialists have also designed the inlet pipe-work for the two facilities. This is optimized to keep vibration to a minimum and boost efficiency, reducing energy consumption and prolonging the operating life of the pumps. During the tendering process, the Sulzer team created a virtual reality simulation of the facility, so the utility and contractor could visualize exactly how the proposed solution would work.

The assembly of the equipment started in November and the pumping stations are expected to be fully operational by the end of 2020. The equipment has been designed to meet forecast demand until 2060, at which point rising water levels mean the lock will be permanently closed and the stations upgraded as they become the only means of drainage from the reclaimed land. The new facilities have been designed to permit this change within the existing space envelope, with the whole project expected to protect the town and surrounding areas until the year 2110.



Sulzer's virtual reality simulation of the installation helped other contractors visualize the site

Contact

kasper.frederiksen@sulzer.com

www.sulzer.com

A10441 en 3.2021, Copyright © Sulzer Ltd 2021

This study is a general product presentation. It does not provide a warranty or guarantee of any kind. Please contact us for a description of the warranties and guarantees offered with our products. Directions for use and safety will be given separately. All information herein is subject to change without notice.