

Efficient pump replacement solution for wastewater pumping stations



Time for change

When pumping station equipment gets older the risk of breakdowns and disruptions increases, switching out your old pumps to the submersible sewage pump type ABS XFP is easy with the Sulzer adapter bracket which fits to the existing guiderail. Choosing the XFP also means lower energy consumption, reduced maintenance costs and blockages.

Excellent rag handling

Contrablock Plus impellers are especially engineered to handle tough requirements such as decreased water consumption and increased rag and solid content.

Lower maintenance costs and long term reliability

Downtime and call-outs caused by blockages and breakdowns are minimized due to the excellent rag handling.

Long-term reliability is also assured due to the minimum bearing life of 50'000 hours for motors up to 9 kW and 100'000 hours for motors larger than 11 kW.

Lower energy consumption

Reduced energy usage not only equals lower energy costs but also has a direct impact on the CO₂ footprint of your organization.

Easy switch out for existing product

Any previously installed product may be switched out without the need to change the guiderail using the Sulzer adapter bracket.



Uncompromised blockage protection

As the rags and solids in wastewater increase, you need innovation that keeps pumping stations problem-free. The submersible sewage pump type ABS XFP, with its versatile range of Contrablock Plus impellers, is insurance against downtime that is easy to acquire. The impeller's superior rag handling and minimum free solids passage of 75 mm mean you spend far less time on troublesome pump stations. Switching from an existing pump is easy and you save energy immediately with the XFP's Premium Efficiency IE3 submersible motor – which Sulzer pioneered and provide as standard.

Visit www.sulzer.com/timeforchange for more information.



Simple switch for better efficiency

Any previously installed product may easily be replaced without the need to replace the pedestal and guiderail, simply by using the Sulzer adapter bracket. This way you can save both time and money, during the switch to a more efficient pump.

Retrofitting is easy if the discharge size is the same as the pump it is replacing. All that is required is to fit the adapter with the bolts to your new energy efficient XFP pump and re-install it in the pump station using the existing guiderail. Quick and easy!

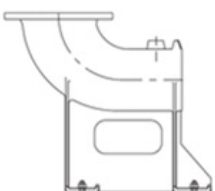
Don't you think it's time for change?

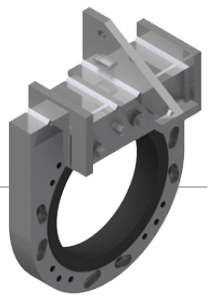
Contact us for more information.

www.sulzer.com/timeforchange



Find the right adapter – quick and easy

		DN flange Sulzer pump					
		DN 80	DN 100	DN 150	DN 200	DN 250	DN 300
DN competitor pedestal base	DN 80	62665303 Hardware kit included					
	DN 100		62665304 Hardware kit included				
	DN 150			62665305 Hardware kit included or 41426060 (2")/ 41426061 (3") Hardware kit 62306242 or 41426062 Hardware kit 62306242			
	DN 200			62665305 Hardware kit included or 41426061 Hardware kit 62306242	41426063 (2")/41426064 (3") Hardware kit 62306244 or 41426050 Hardware kit 62306244		
	DN 250				62665306 Hardware kit included or 41426064 (3") Hardware kit 62306244	41426069/ 41426070/41426071 Hardware kit 62306139 or 41426112 Hardware kit 62306434	
	DN 300					41426069/41426071 Hardware kit 62306139	41426072/41426051 Hardware kit 62306245



The part numbers depend on the pump model, please contact your local Sulzer sales office for information.

www.sulzer.com

E10442 en 3.2020, Copyright © Sulzer Ltd 2020
This brochure is a general presentation. It does not provide any warranty or guarantee of any kind. Please, contact us for a description of the warranties and guarantees offered with our products. Directions for use and safety will be given separately. All information herein is subject to change without notice.

