

Light Wastewater Pump Type ABS MF 154 - 804

SULZER

Compact submersible pumps with large solids passage for the reliable and effective dewatering of buildings and sites.

Applications

MF submersible pumps have been designed to cover a wide range of internal and external dewatering applications.

- Filling and emptying of containers to the drainage of flooded cellars and removal of rainwater.
- Suitable for use in septic tanks and pumping effluent from locations below the backwash level in accordance with EN 12056.
- For locations such as building sites, the MF 354, MF 504 & MF 804 are available in a VO version, featuring a protective screen, elbow and hose coupling.
- The vortex hydraulics are particularly suitable for the pumping of fluids containing gaseous or abrasive particles.
- The compact shape of the MF, fittings for easy mounting, and small sump requirements ensure a quick and cost-effective installation of the pump.
- Maximum allowable temperature is 40 °C, or short term up to 60 °C (max. 5 minutes).

Construction

The water-tight, fully flood-proof cast iron motor and the hydraulics section comprise a compact, robust, unit construction.

Motor

Three-phase 400 V and single-phase 220-240 V, 50 Hz, 2-pole (2900 r/min) motors. Insulation class F; protection type IP68.

Bearings

The stainless steel motor shaft is supported in lubricated-for-life ball bearings.

Shaft sealing

Between motor and hydraulic section by means of a high quality mechanical seal of carbon / silicon carbide on MF 154-334 and silicon carbide on MF 354-804. Seal at motor side is an oil-lubricated lip seal. Both are independent of direction of rotation and resistant to temperature shock.

Temperature monitoring

Thermal sensors in the stator to switch off the pump in the case of overheating and switch on automatically after cooling down.

Hydraulic section with vortex impeller

Free solids passage 20 mm (MF 154), 30 mm (MF 324 & 334), 40 mm (MF 354, 404, 504, 804) and 60 mm (MF 565 & 665).



Features

- Simple, cost-effective, pump installation.
- Vortex hydraulics for blockage-free pumping in critical applications.
- Free-standing on legs or pedestal mounted.
- Discharge connections G 1¼"-G 2" internal thread and DN 65 flange.
- Mechanical and lip seals on rotor shaft.
- Thermal sensors to protect motor against overheating.
- KS version with float switch for automatic level control.
- EasyFit plug-in cable connection.
- Single-phase fitted with Schuko plug; three-phase with CEE plug.

Materials

| Description | Material |
|---------------|-----------------------------------|
| Upper lid | Stainless steel 1.4301 (AISI 304) |
| Motor housing | Cast iron EN-GJL-250 |
| Rotor shaft | Stainless steel 1.4021 (AISI 420) |
| Volute | Cast iron EN-GJL-250 |
| Impeller | Polyamide |
| Cable | Neoprene |
| Fasteners | Stainless steel 1.4401 (AISI 316) |

Technical data

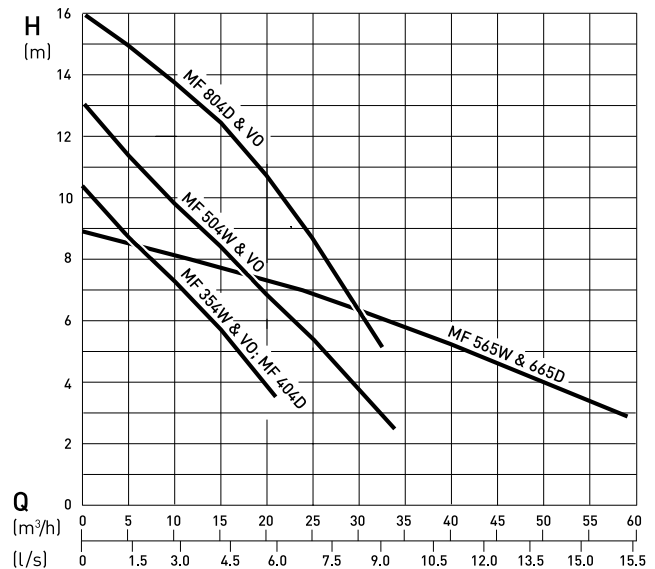
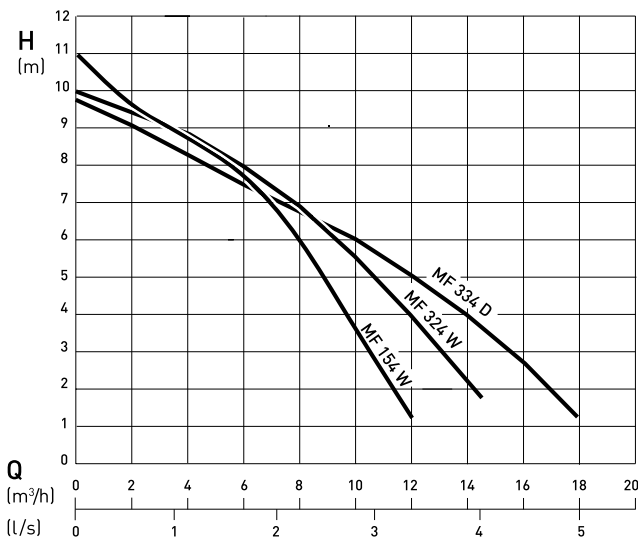
| MF | 154 W | 324 W | 334 D | 354 W | 404 D | 504 W |
|-----------------------|--------------------------------------------|---------------|---------------|---------------|---------------|---------------|
| Discharge connection* | G 1½"-1¼" | G 1½"-1¼" | G 1½"-1¼" | G 2" | G 2" | G 2" |
| Motor power (kW)** | P ₁ 0.65 P ₂ 0.42 | 0.83 0.54 | 0.83 0.56 | 1.10 0.70 | 1.41 0.80 | 2.05 1.45 |
| Speed (r/min) | 2900 | 2900 | 2900 | 2900 | 2900 | 2900 |
| Rated voltage (V) | 220-240 1~ | 220-240 1~ | 400 3~ | 220-240 1~ | 400 3~ | 220-240 1~ |
| Rated current (A) | 2.8 | 3.6 | 1.4 | 4.8 | 2.0 | 9.0 |
| Cable type (H07RN8-F) | 3G1.0 | 3G1.0 | 4G1.0 | 3G1.0 | 4G1.0 | 3G1.0 |
| Cable length (m)*** | 3, 10, 20, 30 | 3, 10, 20, 30 | 3, 10, 20, 30 | 3, 10, 20, 30 | 3, 10, 20, 30 | 3, 10, 20, 30 |
| Weight (kg) | 8.5 | 8.5 | 8.9 | 14.0 | 14.0 | 17.0 |
| Solids size (mm) | 20 | 30 | 30 | 40 | 40 | 40 |
| MF | 565 W | 665 D | 804 D | VO 354 W | VO 504 W | VO 804 D |
| Discharge connection* | DN 65 | DN 65 | G 2" | G 2"- C | G 2"- C | G 2"- C |
| Motor power (kW)** | P ₁ 2.6 P ₂ 1.8 | 2.6 2.0 | 2.40 1.80 | 1.10 0.70 | 2.05 1.45 | 2.40 1.80 |
| Speed (r/min) | 2900 | 2900 | 2900 | 2900 | 2900 | 2900 |
| Rated voltage (V) | 220-240 1~ | 400 3~ | 400 3~ | 220-240 1~ | 220-240 1~ | 400 3~ |
| Rated current (A) | 11.6 | 4.6 | 4.1 | 4.8 | 9.0 | 4.1 |
| Cable type (H07RN8-F) | 3G1.0 | 4G1.0 | 4G1.0 | 3G1.0 | 3G1.0 | 4G1.0 |
| Cable length (m)*** | 3, 10, 20, 30 | 3, 10, 20, 30 | 3, 10, 20, 30 | 10, 20, 30 | 10, 20, 30 | 10, 20, 30 |
| Weight (kg) | 24.0 | 24.0 | 20.0 | 15.2 | 18.2 | 21.2 |
| Solids size (mm) | 60 | 60 | 40 | 40 | 40 | 40 |

* MF 154-504 and 804: internal threaded (154-334 with 1½" to 1¼" adaptor; MF VO with STORZ-C hose coupling on elbow). MF 565 W and 665 D: flange.

** P₁ = Power taken from mains. P₂ = Power at motor shaft

*** 3 m only with KS pump. Not available on VO; according to VDE regulations submersible pumps for use externally must have a fixed cable connection with a length of at least 10 m. Regulations vary by country.

Performance curves

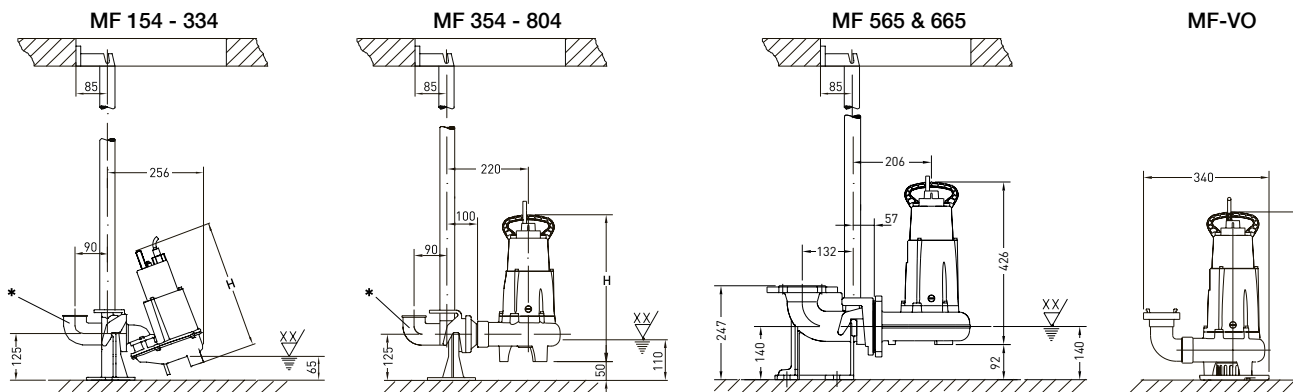


H = Total Head; Q = Discharge Volume.

Curves to ISO 9906.

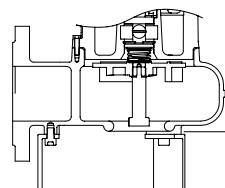
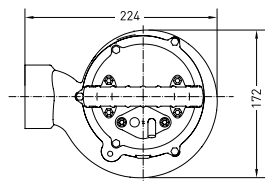
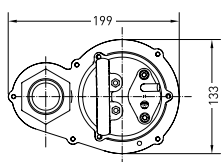
N.B. please use the ABSEL program to validate pump selection.

Dimensions (mm)



XX/ = Lowest switch off level. Minimum switch on level is at least 100 mm higher.

* Elbow to be supplied by customer.

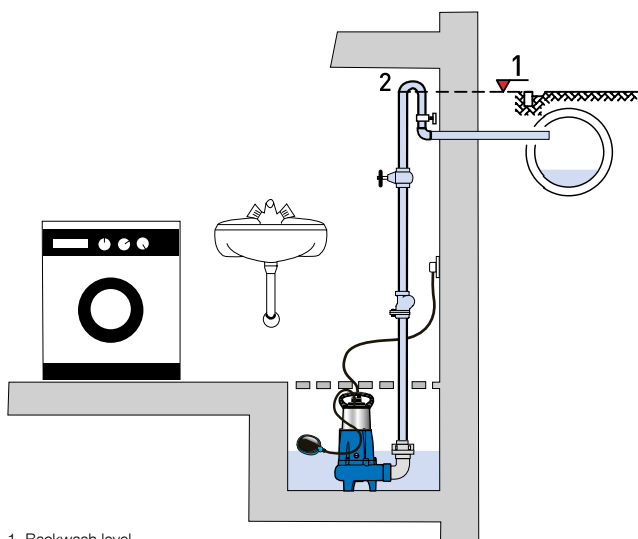


MF 565 and 665 with support legs

| MF | H |
|-----------|-----|
| 154 | 333 |
| 324 & 334 | 350 |
| 354 & 404 | 400 |
| 504 | 425 |
| 804 | 450 |
| 354-VO | 405 |
| 504-VO | 430 |
| 804-VO | 455 |

Installation

Attention to the backwash level is of vital importance for effective dewatering. All outflow points located below the backwash level must be protected against back flow according to EN 12056 standard.



1. Backwash level
2. Backwash loop with base above the backwash level

EasyFit cable connector

Plug-in cable connection for simple replacement of damaged cable without disassembling the pump.



Accessories

| | Description | Size | Part no. | Piranha |
|------------------------------------|--------------------------------------------------------------------------------------------------------------------------------------------------------------------------------------------------------------------------------------------------------------------------------|---------------------------------------------------|----------------------|--------------------------------------|
| Fixed installation | Pedestal (cast iron EN-GJL-250) vertical discharge, without bend horizontal discharge, without bend horizontal discharge, without bend 90° cast bend | G 1¼" / G 2" | 62325012 | 154 - 334 |
| | | G 1¼" / G 2" | 62325001 | 324 & 334 |
| | | G 2" / G 2" | 62320560 | 354 - 804 |
| | | DN 65 | 62320673 | 565 & 665 |
| | | | | |
| | Bracket Kit vertical discharge | G 1¼" / G 2" | 62325014 | 154 - 334 |
| | Guide Rail (galvanized steel) | 1¼" x 1 m | 31380007 | 154 - 804 |
| | | 1¼" x 2 m | 31380008 | 154 - 804 |
| | | 1¼" x 3 m | 31380009 | 154 - 804 |
| | | 1¼" x 4 m | 31380010 | 154 - 804 |
| | | 1¼" x 5 m | 31380011 | 154 - 804 |
| | Chain Kit (galvanized steel) including shackle | 3 m | 61265065 | 154 - 804 |
| | | 4 m | 61265093 | 154 - 804 |
| | | 6 m | 61265069 | 154 - 804 |
| | | 7 m | 61265096 | 154 - 804 |
| | Chain Kit (stainless steel) including shackle | 3 m | 61265081 | 154 - 804 |
| | | 4 m | 61265099 | 154 - 804 |
| 6 m | | 61265085 | 154 - 804 | |
| 7 m | | 61265102 | 154 - 804 | |
| Transportable | Coupling Spanners (two required) | A-B-C | 15010020 | VO |
| | Support Legs Kit | | 61405015 | 565 & 665 |
| Electrical (fixed installation) | Plug-in Alarm Kit Acoustic alarm with signalling unit for connection to 230 V (Schuko) socket. Acoustic alarm signal, potential-free NO (Normally Opened) contact (I max 12 A / V max 250 V). Optional rechargeable accumulators for mains-independent alarm signal. | with KS float switch | 16025001 | 154 - 804 |
| | | with NSM05 "broken finger" | 16025003 | 154 - 804 |
| | | with humidistat | 16025004 | 154 - 804 |
| | NC-AKKU 9 V rechargeable battery for mains-independent alarm | | 12820018 | 154 - 804 |
| (transportable) | Control Panel Type ABS CP for duplex pumping stations in corrosionresistant plastic housing with automatic change of the operating sequence, acoustic alarm and potential-free fault signal plus float switches. Contact Sulzer for details. | | | |
| | Automatic Level Control with socket into which pump can be plugged without the need to do any wiring (for DIN plugs only) | Single phase: KS-Z 10 Three phase (up to 16 A) | 00830423 00830257 | VO 354, 504, 804 VO 354, 504, 804 |
| General | Non-return Valve (synthetic) flap valve with internal thread | G 1¼" | 61405030 | 154 - 334 |
| | | G 1½" / G 2" | 61405032 | 154 - 804 |
| | Non-return Valve (EN-GJL-250) ball valve with internal thread | G 1¼" | 61400525 | 154 - 334 |
| | | G 1½" | 61400526 | 154 - 334 |
| | | G 2" | 61400527 | 354 - 804 |
| | | G 2½" | 61400543 | 565 & 665 |
| | Gate Valve (brass) with internal thread | G 1¼" | 14040005 | 154 - 334 |
| | | G 1½" | 14040006 | 154 - 334 |
| G 2" | | 14040007 | 354 - 804 | |